

Airmaster:

Master the Air We Breeze

Portable Air Conditioner x Dehumidifier x Air Purifier



官方网页 Website <http://united-airmaster.com>
阿里巴巴 Alibaba <http://airmaster.en.alibaba.com>



United 官网



阿里巴巴 Alibaba

2001年 于中山市设立中山联昌电器
2021年 中山联昌电器展开新的开始
迁至中山市五桂山建立全新的生产基地，
统合上游物料、成品组装、仓储出货，
优化生产管理动线以提升服务效率，
打造更完整的中山联昌工业园区。

2021. Oct: A New Leap in Business Development

Zhongshan Lianchang starts a new page in business.

We build and move to a new Manufacturing Site!

Zhongshan Lianchang Industrial Park combines component sites, assembly factory and ware houses together. The compact supply network could strengthens horizontal and vertical communication, enlarging the producing efficiency.

We've set some great milestones in the past 20 years, and we look forward to achieve a better success in the future.

• **中山聯昌電器有限公司** (郵遞編號 Postcode : 528458)
廣東省中山市五桂山長逸路23號長命水工業區B區廠房
Factory House, Zone B, Changmingshui Industrial Zone, No.23,
Changyi Road, Wuguishan, Zhongshan, Guangdong, China

• **United International Co., Ltd.**
12F, No. 520, Section 4, Ren-Ai Road, Taipei, Taiwan

中山联昌，专业家电代工制造商

移动空调、除湿机、空气清净机与净水机
专业研发移动式生活家电，期望解决生活中的空气与饮水问题
创新、质量、稳定，二十年的坚持，始终如一

+ 专业研发代工

中山联昌电器是来自台湾的专业研发团队，从1995年开始，在广东 OEM/ODM 专业代工市场稳健扎根。中山联昌自诩为空气大师[Air Master]，解决生活中的空气问题: 温度[冷/暖 移动空调]、湿度[除湿机/加湿机]、洁净度[空气清净机]以及清新度[净化芳香机]。

+ 未来概念创新

活化思考才能持续推出成功产品。质感复合性产品是我们这个阶段的发想方向，一机满足多样潜在需求；极简化的繁复选择与操作，让智能生活再进步，升级为单纯生活。

+ 永续经营观

联昌追求空气与水资源的处理、再利用；产品设计的方针是减少破坏[空间与环境]、增加共享性[多用途]、改善效率[节能再利用]，我们期许跟社会、环境永续发展与经营。

United International Co., Ltd. x Zhongshan LianChang Co., Ltd.

Experienced Manufacturer in Portable Home Appliance

Product Line: Portable Air Conditioner, Dehumidifier , Air Purifier

Zhongshan LianChang, one of the professional ODM/OEM manufacturers in China. We are specialized in Portable Air Conditioners, Dehumidifiers and Air Purifiers. We are keen to create SMART compound products satisfying users' multi-needs. We want to follow users' lifestyle, simplifying complex operating procedures in life.

Zhongshan LianChang believes in the balance and fairness of creatures on earth. Thus, we utilize the reuse and recycle of Air and Water resource in pursuit of the sustainable developments in business and environment.

代工贴牌/内销合作/跨境电商(阿里巴巴/亚马逊)

OEM & ODM/ Cross-Border Ecommerce(ALIBABA/ AMAZON)

+ 为世界代工 - [客制化能力 深广的知识]

中山联昌向每位客户负责，对每台产品用心，为了了解不同国家产品需求，我们钻研各国的环境、法规与文化。透过这么多的努力，成功将产品推广至世界各个角落。我们承诺，中山联昌电器有专业能力客制化(OEM/ODM)提供最适合需求的产品。

+ 专利技术与创新概念 - [科技应用 活化新品]

联昌电器的核心竞争力在于研发与创新，联昌拥有30种以上专利，保障技术领先；我们也重视科技应用，获当地政府认可为高新技术企业。

新品的推出是中山联昌运转的活力，融合各文化美学设计的多变外观，团队合作发想出的结构与概念，确保产品线持续更新与扩大。

+ 多国产品认证 - [质量稳定 安全合格]

中山联昌通过多项测试与检验，取得各国产品安规证书，与能效、环保认证，适用国家涵盖美、欧、亚、澳、北非、中东等地。

联昌多款合格认证产品，省去您冗长检验、登录时间与成本，帮助快速进、出口；我们亦提供专业知识辅助，协助新认证申请与取得。

ODM/ OEM Up-to-Date products

To align with customers' growing needs, we dedicate ourselves to investigating environment, product legislation and culture of various countries. Now we successfully expand our business around the world. We commit to providing right products to the right place.

Dynamic Innovation Capability

The core competitive advantage of Zhongshan LianChang is the innovating capability. Our R&D department developed reliable products each year, therefore, we've owned over 30 patents in China ranging from invention, utility and design.

Multinational Certified & Approved

Certified by over 50 countries, we promise to provide safe and approved products without lengthy applying and inspecting process.

Certificate:

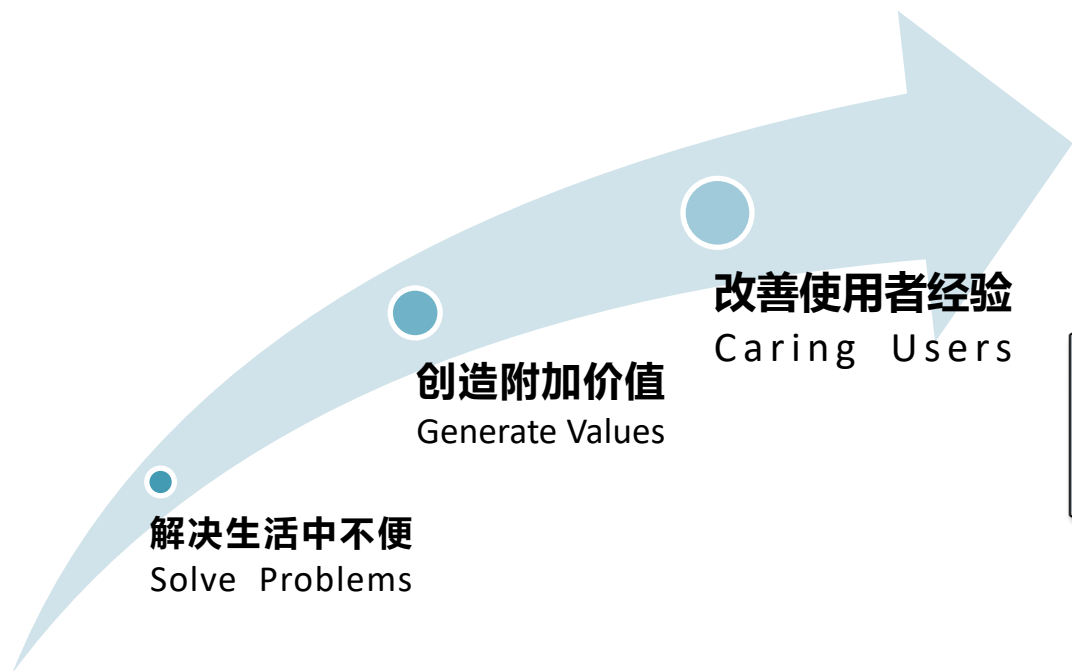
CB/ CE/ GS/ PCT/ cETLus/ CCC/ BSMI/ SASO-ICCP ;
Energy Star/ ROHS/ WEEE

中山联昌产品研发的核心理念从各个层面发想，多元的切入点，才能不断设计出原创且符合用户需求的产品：

解决问题 → 产品价值提升 → 用户体验与生活

Our product developing concept and purpose based on various perspectives, to ensure our products continuously meet users' need:

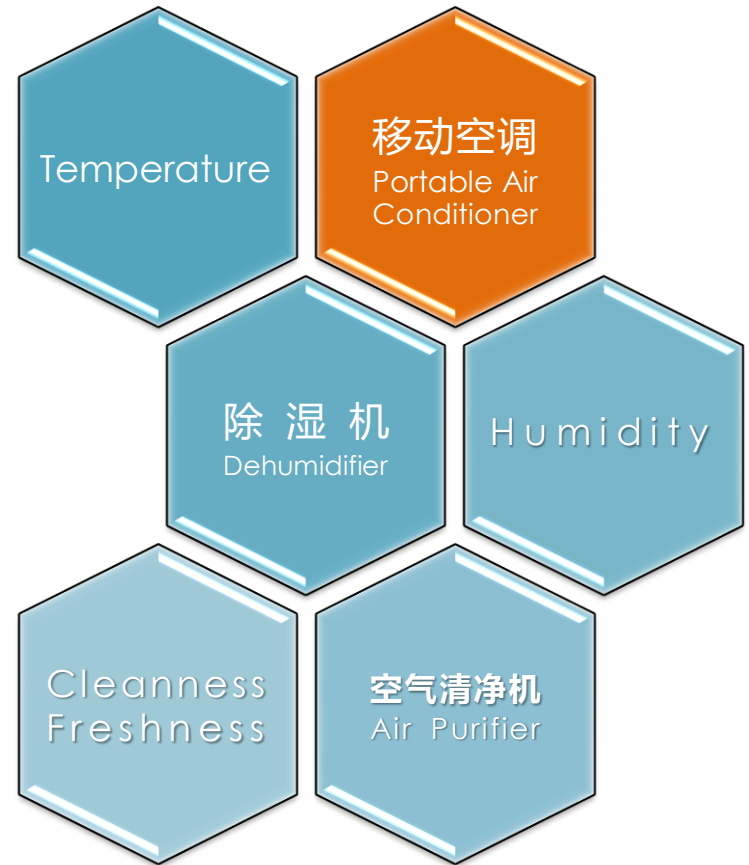
From Problem → Product Value → User Experience



移 动 空 调

- **Portable Air Conditioner:**

Cooling and Heating function to adjust the temperature.
Dehumidifying function to reduce the moisture in air.
Ventilating to drive the air flow refreshing the ambience



温度调节 - 移动空调(制冷)

HOW & WHY TO USE PORTABLE AIR CONDITIONER



弹性达到舒适的温度

媲美柜机的高冷量与双马达加大风量，可以快速带动室内气流，全室降温。

具有即插即用、免安装、不滴漏、轻便移动等特性，不管在(室内)厨房、卧室、浴厕或(室外)阳台、院子晾衣服都可以使用!

Easily Adjust the Indoor Temperature

Powerful cold air with strong air volume efficiently lead the air flow moving around the ambience, and cool down instantly. With theses features: "Plug to use", "Simple install", "No Drainage" and "Easy to move", users can use either indoor(Toilet/ Bedroom/ Kitchen) or outdoor(Yard/ Balcony) anytime.

温度对工作效率的影响

经研究证实，环境温度在25-26度时，可以达到最大的工作绩效! 体温一高，人就会烦躁无法专注与思考，疲劳度也大增。夏天时使用移动空调可加强中央空调不足处；下班断电时也能针对加班员工使用，使用性多元且方便!

Room Temperature and Productivity (Working Efficiency)

Proved by reports, changes in room temperature affect the working performance. The highest productivity is at temperature of around 25-26 °C.

Portable ac can strengthen the cooling performance of central air conditioning system in extreme summer days, or use for working overtime staffs in power off office.

湿度控制 - 移动空调(除湿)

HOW & WHY TO USE PORTABLE AIR CONDITIONER



强效湿度控制

日除湿量可达50~65L，可有效取代市面大多数除湿机! 室内跟人体都干爽、舒适。

一机多用、跨季使用，除湿效率惊人，简单且直觉使用

Efficiently Remove the Moisture

Remove 50~65Liters of water per day, beat most of the dehumidifiers in market. Make users and the ambience cool and dry, comfortable all the time.

Unnecessary to buy additional unit, save the space and the cost. Powerful dehumidifying with simplest control.

过高湿度的影响

太过潮湿易导致人体呼吸道跟皮肤过敏，空气中也容易孳生细菌、霉菌，造成食物腐败、衣物器具发霉。为了使用者的健康与生活的舒适，建议适当使用除湿功能!

Too Much Humidity Cause Problems

Damp and moisture indoor may generate molds and mildew, triggering allergic symptoms on skin or respiratory and making the food, furniture and clothes collapse easily. The moisture penetrates into the wall hurts the building as well.



移动空调的5种好处

- ✿ 极简单安装，轻松插电即用
- ✿ 好推好移动，共享使用好经济
- ✿ 免关门直吹制冷，煮饭、做家事都清凉舒爽
- ✿ 自动蒸发免排水、不怕滴漏
- ✿ IPX防水设计，放置室外好安静



独家特点

- ✿ 内藏风道：
好看好收纳省空间
- ✿ 冷热出风口交换：
充分利用冷暖风
- ✿ 防泼水设计：
四季都可放室外使用
降噪音



5 Reasons to Have Portable Air Conditioner

- 1) Simplest installation, just plug to use
- 2) Movable unit, can share to use among rooms
- 3) Open-space operation, use without closing door
- 4) Self-Evaporation without draining or leaking
- 5) Waterproof design (IPX), outdoor using available

Our Unique Features

- 1) Built-In Duct:**
Easy to store, Save space, Better looking
- 2) Exchangeable air outlets :**
Efficiently use the cold and hot air in multi-ways
- 3) Waterproof design(IPX):**
Durable water and dust proof cases and mechanism

硬实力空调霸主 PC-MMA

Extraordinary Performance AC | PC-MMA



移动空调新品PC-MMA

Portable Air Conditioner | PC-MMA

- *最大制冷能力: 24,000 BTU/H
- *双向显示: 顶部LED显示与触摸屏, 前方特别增设双8显示, 可远距离辨识
- *可自动摆风, 双层叶片带动气流
- *制冷、除湿、通风; 制热需加四通阀
- *90~120L的强大除湿力, 满水自动停机
- *三档风速自由切换: 高-中-低
- *人性化程控: 自动/ 睡眠/ 童锁
- *24档定时器: 定时开; 定时关(独家!)
- *自动蒸发技术: 免排水、不滴漏、强省电
- *另有金属外壳造型同款 PC-MMR

- *Max. Cooling Capacity: 24,000 BTU/H
- *Dual Display: Touch Pad on top with LED display (7-segment) and additional display in the front
- *Auto-Swing available(Vertical blades)
- *Cooling, (Heating), Dehumidifying, Ventilating
- *Powerful dehumidify capacity: 90~120L/Day
- *3-Step Fan Speed: High-Middle-Low
- *User-Friendly Program: Auto/ Lock/ Sleep
- *24Hour Timer: Auto-On / Auto-Off (Unique!)
- *Self-Evaporating: No Draining and No Dripping
- *Similar design in metal case: PC-MMR



产品型号 Model	PC53-MMA	PC65-MMA	PC70-MMA*
制冷能力 Cooling Capacity (W/ BTU)	5300W/ 18000BTU	6500W/ 22000BTU	7000W/ 24000BTU
制热能力 Heating Capacity (W/ BTU)	(5300W/ 18000BTU)	(6500W/ 22000BTU)	(7000W/ 24000BTU)
日除湿量 Dehumidification (30℃, RH80%)	90L/Day	120L/Day	150L/Day
冷媒种类 Refrigerant Type	R290/ R410a	R290/ R410a	R410a
音量 Noise (dB)	65	65	65
产品尺寸 Unit Dimensions (mm)	W540*D695*H1140	W540*D695*H1140	W540*D695*H1140
包装材积 Packing Dimensions (mm)	W590*D780*H1310	W590*D780*H1310	W590*D780*H1310
装柜量 Container Loading (20'/40'/40'HQ)	119	119	119
净重 Net Weight (kg)	62	68	70
毛重 Gross Weight (kg)	71	73	75

*24,000BTU仅限于部分无能效管制国家 *24,000BTU in countries without energy efficiency regulation
*制热为选配功能, 需加四通阀 *Optional Heating function: add a 4-way valve

控制面板 Control Panel



电源
Power



风速
Speed



定时
Timer



功能
Mode



摆风
Swing



睡眠
Sleep

产品设计 Close Look



双LED显示 Dual Display



手把(腰部) Handles(Middle)



自动摆风 Swing(Vertical)



双滤网 Two Filters



冷出风口接头，可接双排风管供多房间/加强定点
Hose Connector: Connect Two Hoses for spot cooling

独创三面出风空调PC-SMA

All-Around Airflow AC | PC-SMA



移动空调新品PC-SMA

Portable Air Conditioner | PC-SMA

- *最大制冷能力: 15,000 BTU/H
- *三面环绕式出风口, 无死角吹拂
- *颜值革新, 超流线外观与触感
- *触摸屏控制与LED双8显示
- *制冷、(选配制热)、除湿、通风
- *弹性温度控制(°C 或 °F可择一显示)
- *可自动摆风, 双层叶片带动气流
- *三档风速自由切换: 高-中-低
- *24档定时器: 定时开; 定时关(独家!)
- *自动蒸发技术: 免排水、不滴漏、强省电
- *50~65L/日的强大除湿力, 满水自动停机
- *特色风管收纳设计与包装
- *可加购配件窗格版, 效能大提升

- *Max. Cooling Capacity: 15,000 BTU/H
- *Surrounding air outlet, send the breeze all around the ambient without blocking
- *Cooling, (Heating), Dehumidifying, Ventilating
- *Flexible Temperature Setting (°C or °F available)
- *Touch Pad with LED display (7 segment)
- *Two powerful motors lead the ambient airflow
- *3-Step Fan Speed: High-Middle-Low
- *24Hour Timer: Auto-On / Auto-Off (Unique!)
- *Self-Evaporating No Draining, No Dripping
- *Powerful dehumidify capacity: 50L~65L/Day
- *Special exhaust hose packaging design in unit
- *Could Adapt to Accessory "Window Kits"



产品型号 Model	PC35-SMA	PC40-SMA	PC44-SMA*
制冷能力 Cooling Capacity (W/ BTU)	3500W/ 12000BTU	4000W/ 14000BTU	4400W/ 15000BTU
制热能力 Heating Capacity (W/ BTU)	(3500W/ 12000BTU)	4000W/ 14000BTU	4400W/ 15000BTU
日除湿量 Dehumidification (30°C, RH80%)	60L	70L	75L
冷媒种类 Refrigerant	R290/ R410a	R290/ R410a	R290/ R410a
音量 Noise (dB)	65	65	65
产品尺寸 Unit Dimensions (mm)	W360*D578*H782	W360*D578*H782	W360*D578*H782
包装材积 Packing Dimensions (mm)	W413*D608*H874	W413*D608*H874	W413*D608*H874
装柜量 Container Loading (20'/40'/40'HQ)	100 / 210 / 313	100 / 210 / 313	100 / 210 / 313
净重 Net Weight (kg)	30.5	31	31.5
毛重 Gross Weight (kg)	34	34.5	34.5

*15,000BTU仅限于部分无能效管制国家 *15,000BTU in countries without energy efficiency regulation
*制热为选配功能, 需加四通阀 *Optional Heating function: add a 4-way valve

控制面板 Control Panel



电源
Power



风速
Speed



定时
Timer



功能
Mode



摆风
Swing



睡眠
Sleep

产品设计 Close Look



LED触摸屏 LED Touch Pad



手把(顶部) Handles(Middle)



自动摆风 Swing(Vertical)



双滤网 Two Filters



三面U型出风口 All-Around Air Outlet (U-Shaped)

美形轻巧空调 PC-PMA

Aesthetic Compact AC | PC-PMA



移动空调新品 PC - MMA
Portable Air Conditioner | PC-MMA



- *制冷能力: 5,000~9,000 BTU/H
- *自动摆风, 快速带动循环气流
- *顶部触摸屏控制与双8显示
- *单冷空调: 制冷、除湿、通风
- *三档风速自由切换: 高-中-低
- *人性化程控: 自动/ 睡眠/ 童锁
- *24档定时器: 定时开; 定时关(独家!)
- *自动蒸发技术:
空调免排水、不怕滴漏, 散热强省电

- *Cooling Capacity: 5,000~9,000 BTU/H
- *Auto-Swing: efficiently runs the cool air cycle
- *Touch Pad on top with 7-Segment display
- *Cooling, Dehumidifying, Ventilating
- *3-Step Fan Speed: High-Middle-Low
- *User-Friendly Program: Auto/ Lock/ Sleep
- *24Hour Timer: Auto-On / Auto-Off (Unique!)
- *Self-Evaporating Technique:
No Draining and No Dripping, Power-Saving

【欧洲规格 EU standard】

产品型号 Model	PC20-PMA	PC26-PMA
制冷能力 Cooling Capacity	2000W/ 7000BTU	2600W/ 9000BTU
日除湿量 Dehumidification (30°C, RH80%)	30L/Day	35L/Day
能源因子值 EER (W/W)	2.61	2.61
风量 Air Volume	250m³/h	250m³/h
冷媒种类 Refrigerant Type	R290/ R410a	R290/ R410a
音量 Noise (dB)	<65	<65
产品尺寸 Unit Dimensions	W310*D340*H715 (mm)	
包装材积 Packing Dimensions	W360*D390*H885 (mm)	
装柜量 CNTR Loading (40'HQ)	569pcs	
净重 Net Weight (kg)	23.5	23.5
毛重 Gross Weight (kg)	25.5	25.5

【美国规格 USA DOE standard】

Model	PC5-PMA	PC6-PMA	PC7-PMA
Cooling Capacity	5,000BTU	6,000BTU	7,000BTU
Dehumidification (30°C, RH80%)	20L/Day	25L/Day	30L/Day
Combined Energy Efficiency Ratio CEERSD	7.54	8.42	4.56
Air Volume	150CFM	150CFM	150CFM
Refrigerant Type	R410a	R410a	R410a
Noise (dB)	<65	<65	<65
Unit Dimensions	W310*D340*H715 (mm)		
Packing Dimensions	W360*D390*H885 (mm)		
Cont. Loading (40'HQ)	569pcs		
Net Weight (kg)	23.5	23.5	24.5
Gross Weight (kg)	25.5	25.5	26.5

控制面板 Control Panel



电源
Power



风速
Speed



定时
Timer



功能
Mode



摆风
Swing

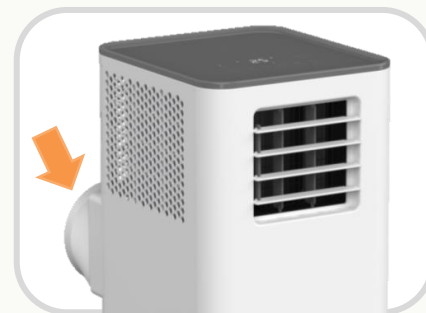


睡眠
Sleep

产品设计 Close Look



LED显示 LED Display



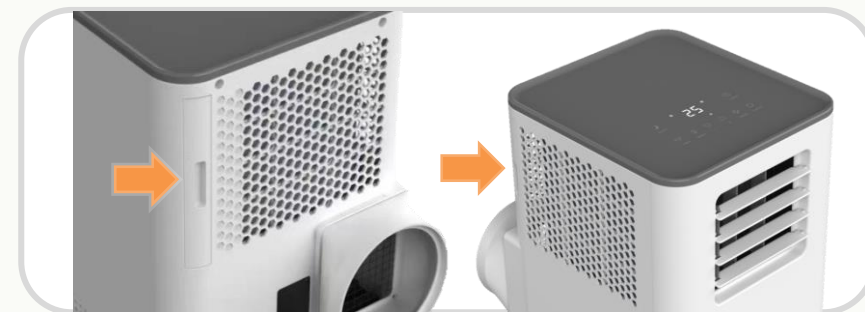
背部接管排风 Exhaust at Back



自动摆风 Swing(Vertical)



造型格栅 Simple Grille



背部与侧面双滤网 Two Filters (Back & Side)

三合一空调系列

3 in 1 Streamlined Series

- 冷热出风口可互换 **Exchangeable Air Outlets**
- 风管收纳保护设计 **Built-In Hose Storage Design**
- 多功能三机合一 **All Purpose 3-in-1: AC + DH + Fan**



移动空调 PC - AMH

Portable Air Conditioner | PC-AMH

- *制冷能力: 7,000~15,000 BTU/H**

***增优雅电子旋钮(温度/风量)搭配触摸屏**

***冷热出风口互换设计, 冷暖风多重使用**

***四功能: 制冷、制热、除湿、通风**

***双风扇马达, 具强力喷射气流**

***24档定时器: 定时开; 定时关(独家!)**

***自动蒸发技术: 免排水、不滴漏、强省电**

***50~65L/日的强大除湿力, 可替代除湿机**

***特殊机内风管收纳设计, 美观省空间**

***可加购件窗格版, 室内室外使用都方便**

***7~10,000BTU可做轻量化机体**
- *Cooling Capacity: 7,000~15,000 BTU/H**

***Unique Touch Pad with Electric Knobs**

***Interchangeable Air-Outlets (Blades/ Hose Adapter)**

***4in1: Cooling, Heating, Dehumidifying, Ventilating**

***Two powerful motors generates superb airflow**

***24Hour Timer: Auto-On / Auto-Off (Unique!)**

***Self-Evaporating : No Draining & No Dripping**

***Powerful dehumidify capacity: 50L~65L/Day**

***Special exhaust hose packaging design in unit**

***Optional Accessory "Window Kits", use Indoor & Outdoor**

***Lite size for 7,000~10,000 BTU**



产品型号 Model	PC20/26/30-AMH2	PC26/ 30/ 35/ 40-AMH	PC44-AMH*
制冷能力 Cooling Capacity	2000 – 2600 – 3000 W 7000 – 9000 – 10000 Btu	2600 – 3000 – 3500 - 4000 W 9000 – 10000 – 12000 - 14000 Btu	4400* W 15000* Btu
制热能力 Heating Capacity	2000 – 2600 – 3000 W 7000 – 9000 – 10000 Btu	2600 – 3000 – 3500 - 4000 W 9000 – 10000 – 12000 - 14000 Btu	4400* W 15000* Btu
日除湿量 Dehumidification (30℃, RH80%)	50 – 50 – 55 L/ Day	50 – 55 – 60 - 65 L/ Day	65L/ Day
冷媒种类 Refrigerant Type	R290/ R410a	R290/ R410a	R410a
音量 Noise (dB)	65	65	65
产品尺寸 Unit Dimensions (mm)	W315*D540*H640	W325*D540*H790	W325*D540*H790
包装材积 Packing Dimensions (mm)	W376*D631*H667	W401*D636*H844	W401*D636*H844
装柜量 Container Loading (20', 40', 40'HQ)	162/ 333/ 443	100/ 206/ 318	100/ 206/ 318
净重 Net Weight (kg)	25.6 - 27.5 - 28.5	28.5 - 29.5 - 30.5	31
毛重 Gross Weight (kg)	28.3 - 29.5 - 30.5	30.5 - 31.5 - 32.5	33

***15,000BTU仅限于部分无能效管制国家 *15,000BTU is only available in countries without energy efficiency regulation**

***本系列具有CE & GS(R290, R410a), CCC(R290, R410a)认证 *This series is CE & GS(R290, R410a), CCC(R290, R410a) certified**

控制面板 Control Panel



电源
Power



风速
Speed



定时
Timer



功能
Mode



温度
Temp.



睡眠
Sleep

产品设计 Close Look



LED触摸屏 LED Touch Pad



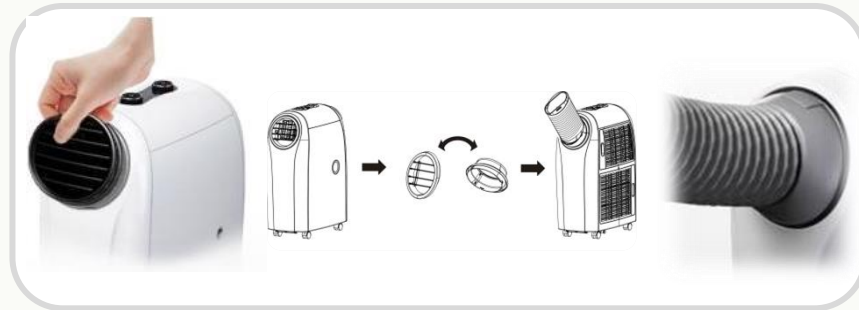
流线造型 Streamlined Case



风管收纳 Internal Hose Storage



双滤网 Two Filters



冷热出风口互换 Interchangeable Air Outlets (Cold/Hot)



P C - A M K
LED触摸屏 LED Touch Pad

制冷&制热 Cooling & Heating
PC-AMK : 9,000~15,000 BTU

制冷 & 制热 Cooling & Heating
PC-AM1F : 9,000~15,000 BTU

P C - A M 1 F
LED触摸屏 LED Touch Pad

制冷 & 制热 Cooling & Heating
PC-AMF : 9,000~15,000 BTU
PC-AMF2 : 7,000~10,500 BTU

P C - A M F
电子按键 Electronic Control



P C - A M 1 E
LED触摸屏 LED Touch Pad

制冷&制热 Cooling & Heating
PC-AM1E : 9,000~15,000 BTU

P C - A M E
电子按键 Electronic Control

制冷&制热 Cooling & Heating
PC-AME : 9,000~15,000 BTU
PC-AME2: 7,000~10,500 BTU

制冷&制热 Cooling & Heating
PC-AMD : 9,000~15,000 BTU
PC-AMD2: 7,000~10,500 BTU

P C - A M D
电子按键 Electronic Control



P C - A M 1 B
LED触摸屏 LED Touch Pad

制冷&制热 Cooling & Heating
PC-AM1B : 9,000~15,000 BTU
PC-AM1B2: 7,000~10,500 BTU

P C - A M B
电子按键 Electronic Control

制冷&制热 Cooling & Heating
PC-AMB : 9,000~15,000 BTU
PC-AMB2: 7,000~10,500 BTU

制冷&制热 Cooling & Heating
PC-AMA : 9,000~15,000 BTU

P C - A M A
电子按键 Electronic Control

制冷&制热 Cooling & Heating
PC-FMA : 9,000~14,000 BTU

P C - F M A
电子按键 Electronic Control

轻巧空调系列

Compact Series

- 三合一多功能产品 **Multiple Functions 3-in-1**
- 风管收纳保护设计 **Built-In Hose Storage Design**
- 特制回风接管配件 **Special Return Airway Cover**



移动空调 PC-KMG

Portable Air Conditioner | PC-KMG

***制冷能力: 7,000~12,000 BTU/H**
***制冷、除湿、通风**
***触摸屏控制与双8显示**
***轻巧机体设计, 省空间、不占位**
***单风轮结构, 大幅降低噪音与重量**
***可自动摆风, 双层叶片带动气流**
***24档定时器: 定时开; 定时关(独家!)**
***自动蒸发技术: 免排水、不滴漏、强省电**
***30~55L/日强大除湿力, 满水自动停机**
***特殊机内风管收纳设计, 包装大减量**
***特制回风罩, 降温效果提升、可露营使用**

***Cooling Capacity: 7,000~12,000 BTU/H**
***Cooling, Dehumidifying, Ventilating**
***Touch Pad with 7-Segment display**
***Compact one-piece-formed design**
***Single motor unit, more quiet and lighter.**
***Double layer blades, with Auto-Swing**
***24Hour Timer: Auto-On / Auto-Off (Unique!)**
***Self-Evaporating : No Draining & No Dripping**
***Powerful dehumidify capacity: 30L~55L/Day**
***Special exhaust hose packaging design in unit**
***Could Adapt to Accessory "Window Kits", and "Return Airway Cover" to improve cooling efficiency.**



产品型号 Model	PC20-KMG	PC26-KMG	PC35-KMG*
制冷能力 Cooling Capacity	2000W 7000Btu	2600W 9000Btu	3500W 12000Btu
日除湿量 Moisture removed (30℃, RH80%)	30L/ Day	50L/ Day	55L/ Day
冷媒种类 Refrigerant Type	R290/ R410a	R290/ R410a	R410a
音量 Noise (dB)	65	65	65
产品尺寸 Unit Dimensions (mm)	W330*D480*H490	W330*D480*H490	W330*D480*H490
包装材积 Package (mm)	W408*D529*H530	W408*D529*H530	W408*D529*H530
装柜量 Container Loading (20', 40', 40'HQ)	202/ 422/ 424	202/ 422/ 424	202/ 422/ 424
净重 Net Weight (kg)	23.5	24.5	25.5
毛重 Gross Weight (kg)	25.5	26.5	27.5

***12,000BTU仅限于部分无能效管制国家** ***12,000BTU is only available in countries without energy efficiency regulation**

***K系列具有CE & GS(R290, R410a), CCC(R290, R410a), CB(R410a) KC(R290, R410a)认证**

***The K series is CE & GS(R290, R410a), CCC(R290, R410a), CB(R410a) KC(R290, R410a) certified**

控制面板 Control Panel



功能
Mode



风速
Speed



定时
Timer



摆风
Swing



温度
Temp.



睡眠
Sleep

产品设计 Close Look



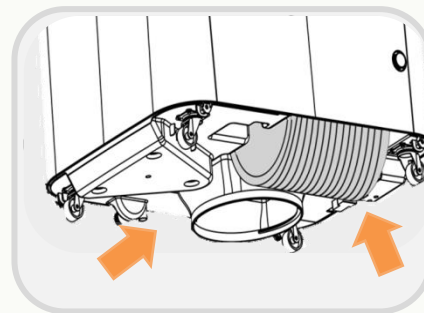
叶片调节 Blades Knob



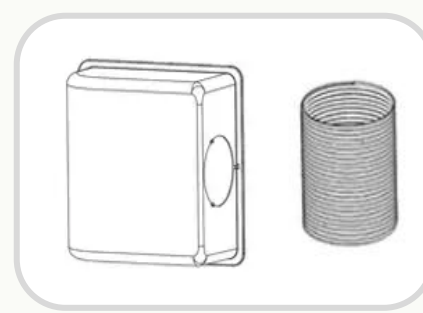
双滤网 Two Filters



可双管回风
Two-Ducts available



风管收纳 Built-In Ducts



回风罩 Return Airway Cover

移动空调 PC-BM1D

Portable Air Conditioner | PC-BM1D

- *制冷能力: 7,000~12,000 BTU/H
- *制冷、除湿、通风
- *触摸屏控制与双8显示
- *轻巧机体设计, 省空间、不占位
- *单风轮结构, 大幅降低噪音与重量
- *人性化程控: 自动/风速/ 睡眠/ 童锁
- *24档定时器: 定时开; 定时关(独家!)
- *自动蒸发技术: 免排水、不滴漏、强省电
- *30~55L/日强大除湿力, 满水自动停机
- *特殊机内风管收纳设计, 包装大减量
- *加购窗格版、回风罩配件, 效能大提升

- *Cooling Capacity: 7,000~10,000 BTU/H
- *Cooling, Dehumidifying, Ventilating
- *Touch Pad with 7-Segment display
- *Compact one-piece-formed design
- *Single motor unit, more quiet and lighter weight.
- *User-Friendly Program: Auto/ Speed/ Lock/ Sleep
- *24Hour Timer: Auto-On / Auto-Off (Unique!)
- *Self-Evaporating : No Draining & No Dripping
- *Powerful dehumidify capacity: 30L~55L/Day
- *Special exhaust hose packaging design in unit
- *Could Adapt to Accessory "Window Kits", and "Return Airway Cover" to improve cooling efficiency.



产品型号 Model	PC20-BM1D	PC26-BM1D	PC35-BM1D*
制冷能力 Cooling Capacity	2000W 7000Btu	2600W 9000Btu	3500W 12000Btu
日除湿量 Moisture removed (30℃, RH80%)	30L	50L	55L
冷媒种类 Refrigerant Type	R410a	R410a	R410a
音量 Noise (dB)	65	65	65
产品尺寸 Unit Dimensions (mm)	W288*D428*H625	W288*D428*H625	W288*D428*H625
包装材积 Packing Dimensions	W372*D537*H694	W372*D537*H694	W372*D537*H694
装柜量 Container Loading (20', 40', 40'HQ)	202/ 422/ 424	202/ 422/ 424	202/ 422/ 424
净重 Net Weight (kg)	23.5	24.5	25.5
毛重 Gross Weight (kg)	25.5	26.5	27.5

*12,000BTU仅限于部分无能效管制国家 *12,000BTU is only available in countries without energy efficiency regulation
*B系列具有CCC(R410a), 美国与加拿大ETL(R410a)认证 *The B series is CCC(R410a), Canada & USA ETL(R410a) certified

控制面板 Control Panel



电源
Power



风速
Speed



定时
Timer



功能
Mode



温度
Temp.

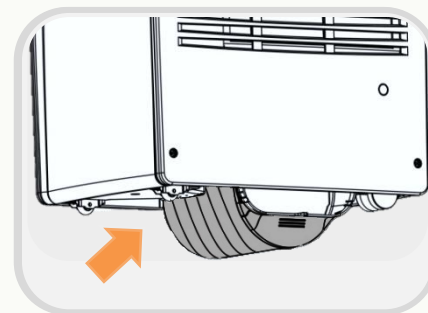


睡眠
Sleep

产品设计 Close Look



LED触摸屏 LED Touch Pad



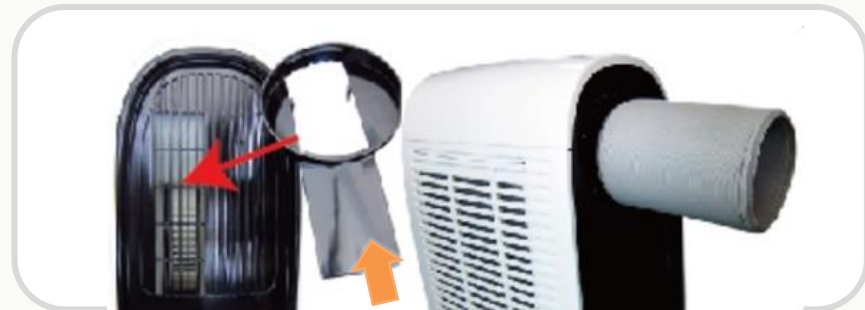
内藏风管 Built-In Duct



双滤网 Two Filters



可双管回风 Two-Ducts available



冷风接管配件 Cool Air Hose Adapter



P C - K M H
LED触摸屏 LED Touch Pad

制冷 Cooling Only
PC-KMH : 7,000~9,000 BTU
*Some Area: 12,000BTU

P C - K M A
电子按键 Electronic Control

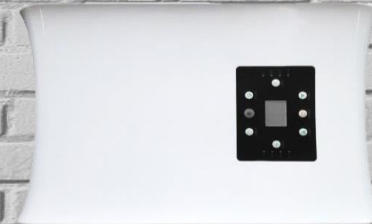
制冷 Cooling Only
PC-KMA : 7,000~9,000 BTU
*Some Area: 12,000BTU

制冷 Cooling Only
PC-BMF : 7,000~9,000 BTU
*Some Area: 12,000BTU

P C - B M F
LED触摸屏 LED Touch Pad

制冷 Cooling Only
PC-BMG : 7,000~9,000 BTU
*Some Area: 12,000BTU

P C - B M G
LED触摸屏 LED Touch Pad



P C - B M D
电子按键 Electronic Control

制冷 Cooling Only
PC-BMD : 7,000~9,000 BTU
*Some Area: 12,000BTU

制冷 Cooling Only
PC-BMB : 7,000~9,000 BTU
*Some Area: 12,000BTU

P C - B M B
电子按键 Electronic Control

P C - B M A
电子按键 Electronic Control

制冷 Cooling Only
PC-BMA : 7,000~9,000 BTU
*Some Area: 12,000BTU

迷你空调系列

Mini 6 in 1 Series

- 六合一多功能产品 Multiple Functions 6-in-1
- 超低能耗好省电 Power Saving, 300w consumption
- 户外携带型轻便设计 Outdoor Portable Design



移动空调 PC - DM1H

Portable Air Conditioner | PC-DM1H

- *最大制冷能力: 3,000 BTU/H
- *超低能耗仅360W, 可携带户外活动、露营等场所, 搭配电池使用
- *触摸屏与LED双8显示
- *功能: 制冷、除湿、加湿、通风
- *选配: 制热(PTC)、净化(HEPA/活性炭滤网)
- *自然加湿: 200ml/ Hour
- *24档定时器: 定时开; 定时关(独家!)
- *20~25L/日的强大除湿力, 满水自动停机
- *人性化程控: 自动/ 睡眠/ 童锁
- *可加购配件窗格版, 效能大提升

- *Max. Cooling Capacity: 3,000 BTU/H
- *Ultra low power consumption 360W, available to use in outdoor activity with portable battery
- *Touch Pad with LED display (7 segment)
- *Function: Cooling, Dehumidifying, Ventilating
- *Optional: PTC Heating, Purifying(HEPA/ Carbon)
- *Moist Humidify: 200ml/ Hour
- *24Hour Timer: Auto-On / Auto-Off (Unique!)
- *Powerful dehumidify capacity: 20L~25L/Day
- *User-Friendly Program: Auto/ Lock/ Sleep
- *Could Adapt to Accessory "Window Kits"



产品型号 Model	PC09-DM1H	PC11-DM1H*
制冷能力 Cooling Capacity (W/ BTU)	900W/ 3000Btu	1100W/ 4000Btu
除湿量 Dehumidification (30℃, RH80%)	25L	30L
加湿量 Humidifying Capacity (mL/ Hour)	200ml	200ml
冷媒种类 Refrigerant	R134a	R134a
音量 Noise (dB)	62	62
产品尺寸 Unit Dimensions (mm)	W280*D375*H505	W280*D375*H505
包装材积 Packing Dimensions (mm)	W310*D450*H530	W310*D450*H530
装柜量 Container Loading (20'/40'/40'HQ)	376 / 768 / 955	376 / 768 / 955
净重 Net Weight (kg)	14.5	15.5
毛重 Gross Weight (kg)	15.7	16.7

*4,000BTU仅限于部分无能效管制国家 4,000BTU is only available in countries without energy efficiency regulation

*本系列具有CCC与CB认证, LMA/LMB仅CCC认证 *Mini PACs are CCC and CB certified, models LMA/ LMB only CCC certified

*暖气为选配功能, 需加PTC发热丝 *Optional Heating function: add a PTC heater

控制面板 Control Panel



触摸屏 Touch Pad



功能
Mode



风速
Speed



定时
Timer



摆风
Swing



温度
Temp.



睡眠
Sleep

产品设计 Close Look



热风免接管 Hose Removable



独立除湿水箱 Water Tank



多重净化滤网(HEPA/活性炭) Multiple Filtrations(HEPA/ Carbon)



上吹式冷出风 (可接管使用) Up-Blow Cool Air (Hose attachable)



P C - L M B
电子按键 Electronic Control

制冷，制热选配 With Cooling
PC-LMA: 2,700~4,500 BTU
(Optional Heating) 600W PTC

制冷，制热选配 With Cooling
PC-DMF : 2,700 ~ 3,000 BTU
(Optional Heating) 600W PTC

P C - D M F
电子按键 Electronic Control

P C - L M A
电子按键 Electronic Control

制冷，制热选配 With Cooling
PC-LMB: 2,700~4,500 BTU
(Optional Heating) 600W PTC



P C - D M 1 D
LED触摸屏 LED Touch Pad

制冷, 制热选配 With Cooling
PC-DM1D: 2,700~3,000 BTU
(Optional Heating) 600W PTC

制冷, 制热选配 With Cooling
PC-DMB: 2,700 ~ 3,000 BTU
(Optional Heating) 600W PTC

P C - D M B
电子按键 Electronic Control

P C - D M G
电子按键 Electronic Control

制冷, 制热选配 With Cooling
PC-DMG: 2,700~3,000 BTU
(Optional Heating) 600W PTC

制冷, 制热选配 With Cooling
PC-DM2A: 2,700 ~ 3,000 BTU
(Optional Heating) 600W PTC

P C - D M 2 A
电子按键 Electronic Control

内 藏 风 道 系 列

B u i l t - I n D u c t S e r i e s

- 风管收纳保护设计 Built-In Duct Protection
- 高效冷、暖、除湿 High Performance HVAC unit



移动空调PC-02MA

Portable Air Conditioner | PC-02MA

- *制冷/制热能力: 10,500~15,000 BTU/H

*简约流线设计, 便于清洁维护

*触摸屏控制与LED双8显示

*制冷、(选配制热)、除湿、通风

*50~65L/日的强大除湿力, 满水停机

*弹性温度控制(°C 或 °F可择一显示)

*双层导风叶片, 可吹拂指定区域

*三档风速自由切换: 高-中-低

*人性化程控: 自动/ 睡眠/ 童锁

*24档定时器: 定时开; 定时关(独家!)

*自动蒸发: 免排水、不滴漏、强省电

*特色风管收纳设计与包装
- *Cooling/ Heating Capacity: 10,500~15,000 BTU/H

*Simple and classic shape, easy to clean

*Cooling, (Heating), Dehumidifying, Ventilating

*Powerful dehumidify capacity: 50L~65L/Day

*Flexible Humidity Setting (°C or °F available)

*2 layers of blades, lead the air cooling specific spot

*3-Step Fan Speed: High-Middle-Low

*User-Friendly Program: Auto/ Lock/ Sleep

*24Hour Timer: Auto-On / Auto-Off (Unique!)

*Self-Evaporating No Draining, No Dripping

*Exhaust hose storing & packing protection



产品型号 Model	PC30-02MA	PC35-02MA	PC40-02MA	PC44-02MA*
制冷能力 Cooling Capacity (W/ BTU)	3000W/ 12000BTU	3500W/ 12000BTU	4000W/ 14000BTU	4400W/ 15000BTU
制热能力 Heating Capacity (W/ BTU)	(3000W/ 12000BTU)	(3500W/ 12000BTU)	4000W/ 14000BTU	4400W/ 15000BTU
除湿量 Dehumidification (30℃, RH80%)	50L	60L	70L	75L
冷媒种类 Refrigerant	R410a	R410a	R410a	R410a
音量 Noise (dB)	65	65	65	65
产品尺寸 Unit Dimensions (mm)	W530*D345*H840	W530*D345*H840	W530*D345*H840	W530*D345*H840
包装材积 Packing Dimensions (mm)	W580*D395*H880	W580*D395*H880	W580*D395*H880	W580*D395*H880
装柜量 Container Loading (20'/40'/40'HQ)	114 / 240 / 349	114 / 240 / 349	114 / 240 / 349	114 / 240 / 349
净重 Net Weight (kg)	27.5	29.5	31.5	33.5
毛重 Gross Weight (kg)	30.5	32.5	34.5	36.5

*本系列仅PC-02MA持有CB认证, 01/06等型号无安规

*Only PC-02MA is CB certified, models 01/ 06 are without certification

*15,000BTU以上仅限于部分无能效管制国家

*15,000BTU and above is only available in countries without energy efficiency regulation

*制热为选配功能, 需加四通阀

*Optional Heating function: add a 4-way valve

控制面板 Control Panel



产品设计 Close Look



2道导风叶片 2 Air Blades



双滤网 Two Filters



电子按键 Electronic Control



电源
Power



风速
Speed



定时
Timer



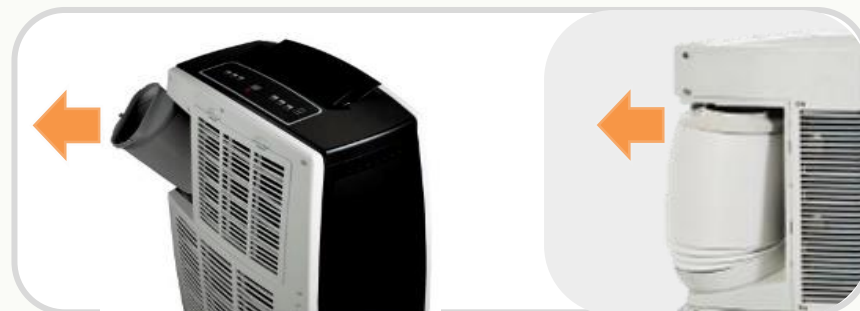
功能
Mode



温度
Temp.



睡眠
Sleep



内藏风管保护 Built-In Duct Protection



P C - 0 1 M A
电子按键 Electronic Control

制冷、(选配制热): 9~14000 BTU
Cooling Capacity: 9,000~14,000 BTU
(Optional Heating: Same Capacity)

P C - 0 6 M I
电子按键 Electronic Control

制冷、(选配制热): 9~14000 BTU
Cooling Capacity: 9,000~14,000 BTU
(Optional Heating: Same Capacity)

制冷、(选配制热): 9000~14000 BTU
Cooling Capacity: 9,000~ 14,000 BTU
(Optional Heating : Same Capacity)

P C - 0 6 M *
电子按键 Electronic Control



1 Blade :
PC-06ME
PC-06MK



2 Blades:
PC-06MD
PC-06MG
PC-06MR

新品总表

Product Table (PAC)



型号	PC-MMA	PC-SMA	PC-PMA
控制面板 Control	触摸屏 Touch Pad	触摸屏 Touch Pad	触摸屏 Touch Pad
制冷能力(W/ BTU) Cooling Capacity	5,300~7,000W 18,000~24,000BTU	3,200~4,400W 11,000~15,000BTU	2,000~2,600W 7,000~9,000BTU
制热能力(W/ BTU) Heating Capacity	N/A	N/A	N/A
日除湿量(30℃ 80%) Dehumidification (L/Day)	90~150L	60~75L	30~50L
风量 Air Volume(m3/H)	950	360~450	250
冷媒 Refrigerant	(EU)R290/ R410a	(EU)R290/ R410a	(EU)R290/ R410a
音量 Noise (dB)	65	65	<65
尺寸 Dimension (mm)	W540*D695*H1140	W360*D578*H782	W310*D340*H715
包装尺寸 Packaging(mm)	W590*D780*H1310	W413*D608*H874	W360*D390*H885
装柜量(20'/40'/40'HQ) Container Loading, pcs	119 (40'HQ)	100 / 210 / 313	569 (40'HQ)
净重 Net Weight (kg)	62~70kg	30.5~31.5kg	23.5kg
毛重 Gross Weight (kg)	71~75kg	34~34.5kg	25.5kg
安规认证 Certificate	N	N	N



大三合一总表

Product Table (Standard)

制冷&制热能力 Capacity: 9,000~14,000 BTU

- 冷热出风口可互换 Exchangeable Air Outlets
- 风管收纳保护 Built-In Hose Storage Design
- 三合一多功能产品 Multiple Functions 3-in-1

型号	PC-AMK	PC-AMH	PC-AME/ PC-AMF	PC-AMD/ PC-AMB	PC-AMA
制冷/制热 (BTU) Cooling & H Capacity	9000~14000 (=2.6k ~ 9k W)	9000~14000 (=2.6k ~ 9k W)	9000~14000 (=2.6k ~ 9k W)	9000~14000 (=2.6k ~ 9k W)	9000~14000 (=2.6k ~ 9k W)
除湿(30℃ 80%) Dehumidification	50~65L/Day	50~65L/Day	50~65L/Day	50~65L/Day	50~65L/Day
冷媒 Refrigerant	R290/ R410a	R290/ R410a	R290/ R410a	R290/ R410a	R290/ R410a
尺寸 Size (W*D*H, mm)	300*505*775	325*540*790	300*550*760	315*540*640	300*486*740
包装 Package (mm)	370*590*855	401*636*844	330*550*815	376*631*667	330*540*780
装柜量 (20'/40'/40'HQ)	116/ 248/ 372	100/ 333/ 443	140/ 288/ 430	162/ 333/ 443	224/ 457/ 462
净重 N.W. (kg)	27.5 ~ 30.5	27.5 ~ 30.5	27.5 ~ 30.5	27.5 ~ 30.5	27.5 ~ 30.5
毛重 G. W. (kg)	29.5 ~ 32.5	29.5 ~ 32.5	29.5 ~ 32.5	29.5 ~ 32.5	29.5 ~ 32.5
认证 Certificate	CE(R290), GS(R290), CCC(R410a), c ETL us(R410a)				



小三合一总表

Product Table (Smaller Unit)

制冷&制热能力 Capacity: 7,000~10,500 BTU

- 冷热出风口可互换 Exchangeable Air Outlets
- 风管收纳保护 Built-In Hose Storage Design
- 三合一多功能产品 Multiple Functions 3-in-1

型号	PC-AMH2	PC-AMF2	PC-AME2	PC-AMD2	PC-AMB2
制冷/制热 (BTU) Cooling & H Capacity	2000~3000 (=7k~10.5k W)	2000~3000 (=7k~10.5k W)	2000~3000 (=7k~10.5k W)	2000~3000 (=7k~10.5k W)	2000~3000 (=7k~10.5k W)
除湿(30℃ 80%) Dehumidification	30~35L/Day	30~35L/Day	30~35L/Day	30~35L/Day	30~35L/Day
冷媒 Refrigerant	R290/ R410a	R290/ R410a	R290/ R410a	R290/ R410a	R290/ R410a
尺寸 Size (W*D*H, mm)	315*540*640	300*526*624	300*526*612	300*480*618	300*480*618
包装 Package (mm)	376*631*667	376*631*667	330*560*660	330*510*660	330*510*660
装柜量 (20'/40'/40'HQ)	162/ 333/443	210 / 441 / 581	210 / 441 / 581	234/ 484/ 636	234/ 484/ 636
净重 N.W. (kg)	26.5~28.5	26.5~28.5	26.5~28.5	26.5~28.5	26.5~28.5
毛重 G. W. (kg)	28.5~30.5	28.5~30.5	28.5~30.5	28.5~30.5	28.5~30.5
认证 Certificate	CE, GS(R290), CCC(R410a)				



轻巧空调总表

Product Table (Compact)

制冷能力 Cooling Capacity: 7,000~12,000 BTU

- 风管收纳保护 Built-In Hose Storage Design
- 三合一多功能产品 Multiple Functions 3-in-1
- 单马达结构 Single motor mechanism
- 可搭配回风罩 Return Airway Accessory

型号	PC-KMG PC-KMH	PC-BM1D	PC-BMF PC-BMG	PC-BMA PC-BMD	PC-BMB
制冷/制热 (BTU) Cooling & H Capacity	7000~12000 (2k ~ 12k W)	7000~12000 (2k ~ 12k W)	7000~12000 (2k ~ 12k W)	7000~12000 (2k ~ 12k W)	7000~12000 (2k ~ 12k W)
除湿(30°C 80%) Dehumidification	30~55L/Day	50~65L/Day	50~65L/Day	50~65L/Day	50~65L/Day
冷媒 Refrigerant	R290/ R410a	R410a	R410a	R410a	R410a
尺寸 Size (W*D*H, mm)	330*480*490	288*428*625	288*428*640	288*428*625	300*455*630
包装 Package (mm)	408*529*530	372*537*694	318*463*660	318*463*660	355*495*665
装柜量 (20'/40'/40'HQ)	202/ 422/ 424	202/ 422/ 424	270/ 555/ 730	270/ 555/ 730	216/ 495/ 665
净重 N.W. (kg)	23.5~25.5	23.5~25.5	23.5~25.5	23.5~25.5	23.5~25.5
毛重 G. W. (kg)	25.5~27.5	25.5~27.5	25.5~27.5	25.5~27.5	25.5~27.5
认证 Certificate	PC-K: CE & GS, CCC(R290, R410a), CB(R410a), KC(R290, R410a); PC-B: CCC, ETL(R410a)				



迷你空调总表

Product Table (Mini 6in1)

制冷&制热能力 Capacity: 7,000~10,500 BTU

- 冷热出风口可互换 Exchangeable Air Outlets
- 风管收纳保护 Built-In Hose Storage Design
- 三合一多功能产品 Multiple Functions 3-in-1

型号	PC-DM1H	PC-LMA PC-LMB	PC-DMF	PC-DM1D PC-DMG	PC-DM2A
制冷 Cooling Capacity (BTU)	3000 (=900W)	3000 (=900W)	3000 (=900W)	3000 (=900W)	3000 (=900W)
除湿(30°C 80%) Dehumidification	25 L/Day	25 L/Day	25 L/Day	25 L/Day	25 L/Day
加湿 Humidification	200 ml/H	200 ml/H	200 ml/H	200 ml/H	200 ml/H
尺寸 Size (W*D*H, mm)	280*375*505	280*375*505	282*400*507	282*400*507	280*375*505
包装 Package (mm)	310*450*H30	310*450*530	325*438*532	325*438*532	310*450*530
装柜量 (20'/40'/40'HQ)	376/ 768/ 955	376/ 768/ 955	364/ 756/ 943	364/ 756/ 943	376/ 768/ 955
净重 N.W. (kg)	14.5	15.5	15.5	15.5	15.5
毛重 G. W. (kg)	15.7	16.7	16.7	16.7	16.7
认证 Certificate	CCC, CB (R134a)				



内藏风道总表

Product Table (Built-In Duct)

制冷&制热能力 Capacity: 9,000~14,000 BTU

- 风管收纳保护 Built-In Hose Storage Design
- 三合一多功能产品 Multiple Functions 3-in-1

型号	PC-FMA	PC-02MA	PC-01MA PC-06MI	PC-06MD PC-06MK
制冷/制热 (BTU) Cooling & Heating	9000~14000 (=2.6k ~ 9k W)	9000~14000 (=2.6k ~ 9k W)	9000~14000 (=2.6k ~ 9k W)	9000~14000 (=2.6k ~ 9k W)
除湿(30°C 80%) Dehumidification	50~65L/Day	50~65L/Day	50~65L/Day	50~65L/Day
冷媒 Refrigerant	R410a	R410a	R410a	R410a
尺寸 Size (W*D*H, mm)	355*546*793	530*345*840	476*358*840	476*358*780
包装 Package (mm)	384*576*845	580*395*880	540*417*880	540*417*820
装柜量 CNTR (20'/40'/40'HQ)	120/ 248/ 372	114/ 240/ 349	116 / 244 / 356	116 / 244 / 366
净重 N.W. (kg)	27.5~30.5	27.5~33.5	28.5~31.5	28.5~31.5
毛重 G. W. (kg)	29.5~32.5	30.5~36.5	31.5~34.5	31.5~34.5
认证 Certificate	N/A			

移动空调配件 | 回风罩

PAC Accessories | Return Airway Cover



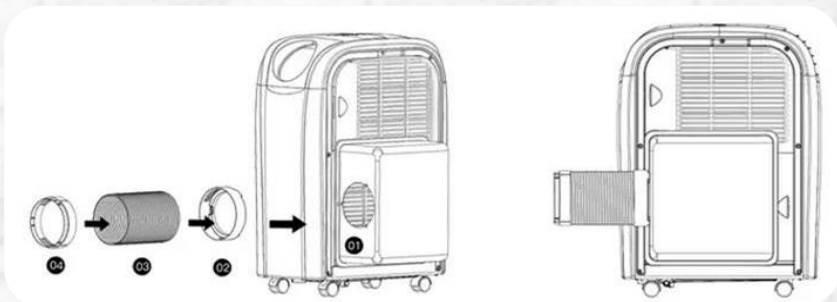
一般单管移动空调，使用时室内气压变低(室内进风、并排出热空气到室外，造成内部空气变少)，因为大气压力原理，室外的未处理空气会从缝隙涌入，使移动空调的室内降温效果较差，直吹效果比较优异。

为改善这个情况，特制可拆卸回风罩，自由选择使用时机，有单管移动空调的便利性、省空间、好移动；在极高温时切换成双管移动空调，高效率环境降温！

The easy-removable Return Airway Cover preserve both benefits of single-duct and double-ducts PAC. Use the cover to keep the air pressure balance , improving the ambience cooling efficiency in specific hot conditions; remove cover to keep unit's mobility and save indoor space.

产品组装方式

How to Assemble



依序装上回风罩、风罩接口、排风管、排风管末端接口与窗隔板
Follow below orders to assemble: Return airway cover, Cover adaptor, Exhaust hose, Hose adaptor and related Window kit.

适用产品系列

Applicable Series



移动空调配件 | 窗隔板

PAC Accessories | Window Kits

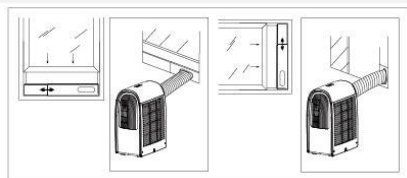
窗隔板可以维持室内密闭性，且有效排除空调制冷产生的热风。配合使用环境，可以安装不同形式的配件。

The window kit can keep the ambience in good balance of air pressure, and efficiently lead the hot exhaust air out. Various design of window kits for different environment.

TYPE A

最短: 55公分 最长: 100公分

Min.: 55cm Max.: 100cm



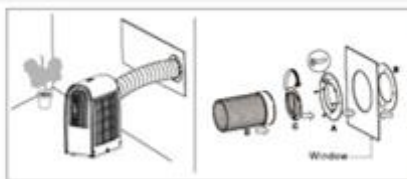
A型窗隔板的最大特点是不需在墙壁或窗上开洞，且可配合窗户设计垂直或水平安装。滑动板长度可以随窗户尺寸调整、再以螺丝锁紧，将固定住的A型窗隔板用窗户、窗框沟槽夹住即可完成安装。

The type A is unnecessary to change structure of the room, just put the **Type A window kits** with the adjustable sliding pad vertically or horizontally to the window. Find the suitable length and fix the pads with screws, and then fit the window kit set into the window groove.

TYPE B

开孔直径: $\phi 140\text{mm}$ 螺丝孔径 $\phi 4.5\text{mm}$

Hole Diameter: $\phi 140\text{mm}$ Screw $\phi 4.5\text{mm}$



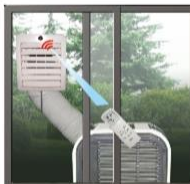
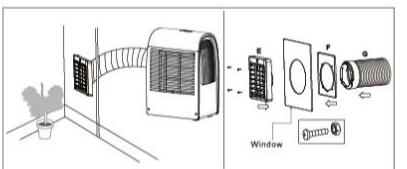
使用B/ C型窗隔板时需先在墙壁或玻璃窗上开孔，再将外层圆环与内层格栅环夹住墙壁/玻璃窗并以螺丝锁紧。窗隔板不使用或者不连接机台时，请盖上罩子，避免异物入侵。

To use **Type B or C window kits**, you have to open a hole on window or wall, and fix the inner grille ring & outer ring with screws. Cover the window kit when you remove the unit from window kit, to avoid items enter the ambience.

TYPE C

开孔直径: $\phi 158\text{mm}$ 螺丝孔径 $\phi 4.5\text{mm}$

Hole Diameter: $\phi 158\text{mm}$ Screw $\phi 4.5\text{mm}$



*C型窗隔板具有红外线接收器或USB接头，使用者可用遥控器或者APP远距离控制。

*Type C window kits include either a red-farad receiver or type-A USB hub, users could control the unit with remote controller or app.

除湿机

- Dehumidifier:
Reduce the humidity and Dry the moist stuffs



产品用途 - 除湿机(除湿)

HOW & WHY TO USE DEHUMIDIFIER



强效湿度控制

弹性湿度控制30%, 40%...90%, 可配合天气跟空间调整!
还有不同模式: 干衣、连续除湿CO、舒爽AU、睡眠SLEEP、清净CL, 除了使室内跟人体都干爽、舒适, 还能抑止细菌、霉菌滋生, 健康更升级。

Efficiently Remove the Moisture

Setting the desired humidity flexibly from 30%, 40%... to 90% in different weather. Also provide various smart modes: Continuous Dehumidification[CO], Comfort Mode[AU], Sleep Mode[SLEEP] and Purification[CL].
Waive the damp, the mildew, the bacteria and the odor. Make users and the ambient in comfortable and healthy conditions.

过高湿度的影响

太过潮湿易导致人体呼吸道跟皮肤过敏, 空气中也容易孳生细菌、霉菌, 造成食物腐败、衣物器具发霉。为了使用者的健康与生活的舒适, 建议适当使用除湿功能!

Too Much Humidity Cause Problems

Damp and moisture indoor may generate molds and mildew, triggering allergic symptoms on skin or respiratory and making the food, furniture and clothes collapse easily. The moisture penetrates into the wall hurts the building as well.



除湿机的5种好处

- 1) 使环境干爽、舒适
- 2) 连绵雨季好干衣
- 3) 降低皮肤、鼻子与呼吸系统过敏不适
- 4) 减少细菌、霉菌滋生机会
- 5) 避免物品发霉、腐败异味(书、食物、家具)

独家特点

- 1) 温风除湿: 可同时暖被、烘鞋
- 2) 24小时开机/关机定时: 随时放心、弹性使用
- 3) 两用排水: 用水箱储水, 或接水管连续排水
- 4) 透明彩色水箱: 可清楚辨认水箱水位
- 5) 自动除霜与水箱水满警报

5 Reasons to Have Dehumidifiers

- 1) Make ambient dry and comfortable
- 2) Dry clothes in rain season
- 3) Reduce the generates of nose and skin allergens
- 4) Lower the breeding of bacteria and mildew
- 5) Free from odor of mould (books, food, furniture)

Our Unique Features

- 1) Warm air dehumidifier: Dry blanket & warm shoes
- 2) 24 hour ON/ OFF timer: flexible and safe to use
- 3) Tank with Pipe connection: Continuous draining
- 4) Transparent water tank: Easily see the water level
- 5) Self-Defrost and Tank Full Alarm

全能家用除湿机PD-WAE

High Performance Dehumidifier | PD-WAE



重点产品 - 除湿机 PD - W A E
High Performance Dehumidifier | PD-WAE

- *最大日除湿能力: 25, 30, 35L/ Day
- *流线质感触摸屏, 高亮度温度&湿度双显示
- *智慧家电: 可Wi-Fi 联机 & APP控制
- *弹性湿度设定与模式: 30~90%; 自动, 干衣
- *连续干衣、除湿, 保持衣物干爽柔软无异味
- *四档定时器(1/ 2/ 4/ 8小时): 自动开 & 关机
- *高质量压缩机, 静音运转、低震动、无嗡鸣
- *适用温度: 5~32 °C, 低温自动除霜
- *安全警示: 满水自动停机, 搭配嗡鸣警示
- *4.8L加大水箱, 亦可收纳电源线

- *Water Removal: 25, 30,35L/Day (30°C RH80%)
- *Touch pad with Temperature and Humidity display
- *Smart appliance with Wi-Fi and APP control
- *Humidity Setting: 30~90%; Auto, Clothes-Drying
- *Continuous Clothes Drying: Makes the clothes soft and dry, and keep the closet fresh and odorless
- *Auto On/Off timer: Auto-on or auto-off in 1/ 2/ 4/ 8 Hr
- *Silent compressor: Stable operation with low vibration
- *Applicable Environment: 5~32 °C. (Low Temp. Self-Defrost)
- *Safe Alarm: Unit stops operating while the tank is full
- *4.8L large water. Power cord storage available.



产品型号 Model	PD-WAE / PD-WBE		
日除湿量 Capacity (L/Day, 30°C,RH80%)	20	30	35
日除湿量 Capacity (L/Day, 27°C,RH60%)	10	15	18
冷媒种类 Refrigerant Type	R290/ R134a	R290/ R410a	R290/ R410a
水箱容量 Water Tank Volume (L)	4.8L	4.8L	4.8L
音量 Noise (dB)	51	51	51
产品尺寸 Unit Dimensions (mm)	W408*D268*H574	W408*D268*H574	W408*D268*H574
包装材积 Packing Dimensions (mm)	W496*D356*H620	W496*D356*H620	W496*D356*H620
装柜量 CNTR Loading (20'FT/40'GP/40'HQ)	216/ 459/ 612	216/ 459/ 612	216/ 459/ 612
净重 Net Weight (kg) /	17	18	18.5
毛重 Gross Weight (kg)	18.3	19.3	20

控制面板 Control Panel



智能联机
Wi-Fi



风速
Speed



定时
Timer



模式
Modes

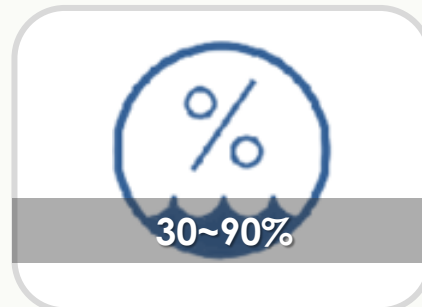


湿度设定
Humidity +/-



睡眠
Sleep

产品设计 Close Look



湿度设定 Humidity Setting



定时器(开/关) Timer(On/Off)



湿&温度显示 Temp.& Humidity



水箱 Water Tank



万向脚轮 Castors



内推手把 Hidden Handles

母婴静音除湿机PD-KAE

Baby Dehumidifier | PD-KAE



重点产品 - 除湿机 PD - K A E
Truly Silent Dehumidifier | PD-KAE

- *除湿量: 5, 7, 10, 12L/ Day (30°C RH80%)
- *静音安眠除湿(40dB), 运转整晚不失眠
- *迷你轻巧机身, 妇女/长辈好搬运
- *弹性湿度与模式: 50~80%, CO, AU, CL
- *连续干衣除湿, 保持衣物干爽柔软 无异味
- *24档定时器: 定时开; 定时关(独家!)
- *高质量压缩机, 静音运转、低震动无嗡鸣
- *2.5L加大水箱, 亦可收纳电源线
- *高密度尼龙滤网, 可重复清洗、阻挡空气中灰尘与异物进入机体, 有效净化空气!
- *另有简单ON/OFF控制款: PD-KAM

- *Water Removal: 5, 7, 10, 12L/Day (30°C RH80%)
- *Quite Sleep Mode for baby and light sleeper
- *Adorable baby size with super light weight
- *Flexible Humidity Setting and modes: 50~80
- *Continuous Clothes Drying: Makes the clothes soft and dry, and keep the closet fresh and odorless
- *24 hour timer: Auto-on or auto-off with simplest setting.
- *Silent compressor: Stable, quiet and slightest vibration
- *2.5L large water tank prolong the dehumidify duration
- *Washable high density filter catches dust and hair in air
- *Simple On/Off Control model: PD-KAM



产品型号 Model	PD-KAE / PD-KBE	
日除湿量 Capacity (L/Day, 30°C,RH80%)	10	12
日除湿量 Capacity (L/Day, 27°C,RH60%)	5	6
冷媒种类 Refrigerant Type	R290/ R134a	R290/ R134a
水箱容量 Water Tank Volume (L)	2.5L	2.5L
音量 Noise (dB)	<43	<43
产品尺寸 Unit Dimensions (mm)	W290*D240*H414	W290*D240*H414
包装材积 Packing Dimensions (mm)	W330*D284*H444	W330*D284*H444
装柜量 CNTR Loading (20'FT/40'GP/40'HQ)	700/ 1455/ 1737	700/ 1455/ 1737
净重 Net Weight (kg) /	7	9
毛重 Gross Weight (kg)	8	10.5

控制面板 Control Panel



电源
Power



湿度设定
Humidity +/-

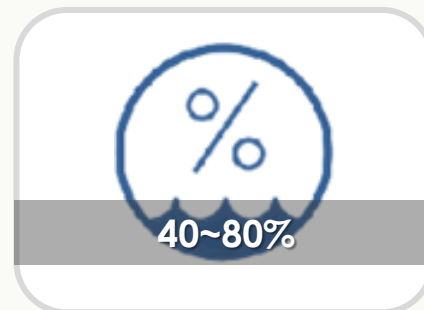


定时
Timer



风速
Speed

产品设计 Close Look



湿度设定 Humidity Setting



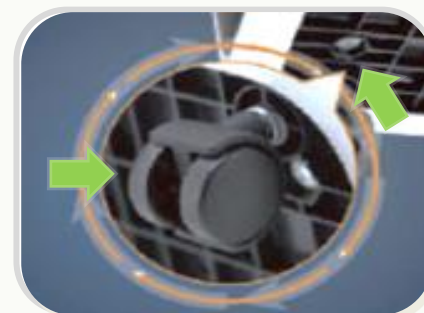
定时器(开/关) Timer(On/Off)



手把 Handles



水箱 Water Tank



选配脚轮 Castors (Optional)



加大出风口 Wide Outlet

靜音除溼系列

Truly - Silent Series



除湿机 PD - JAE

Dehumidifier | PD - JAE

- *日除湿能力: 10, 12L/ Day (30°C RH80%)
- *悬挂除湿架: 去除水箱后悬挂使用, 不占地面空间、快速除去上层角落水气
- *4L防滴漏水箱(附水箱盖) & 透明水位窗
- *弹性湿度模式: 30~90%, 干衣, 连续, 舒适
- *简单风格电子面板与LED双8显示
- *360度环状出风, 高效除湿、干衣
- *24档定时器: 定时开; 定时关(独家!)
- *高质量压缩机, 静音运转、低震动无嗡鸣
- *安全警示: 满水自动停机, 搭配嗡鸣警示

- *Water Removal: 10, 12L/Day (30°C RH80%)
- *Hanging Rack: Put the upper body on rack. Save the space and efficiently remove roof and wall's moisture.
- *4L water tank with cover and transparent window
- *Simple and clean electronic control with LED display
- *Humidity Setting: 30~90%, CO, AU, Clothes Drying
- *360° round outlet, efficiently dehumidify the air
- *24 hour timer: Auto-on or off with simplest setting.
- *Silent compressor: Stable operation without vibration
- *Safe Alarm: Unit stops operating while the tank is full



产品型号 Model	PD-JAE / PD-JAM
日除湿量 Capacity (L/Day, 30°C,RH80%)	10
日除湿量 Capacity (L/Day, 27°C,RH60%)	5
冷媒种类 Refrigerant Type	R134a
水箱容量 Water Tank Volume (L)	4L
音量 Noise (dB)	36~45
产品尺寸 Unit Dimensions (W*D*H, mm)	W314*D180*H482
包装材积 Packing Dimensions (mm)	W344*D210*H443
装柜量 CNTR Loading (20'FT/40'GP/40'HQ)	900/ 1875/ 2203
净重 Net Weight (kg)	9.5
毛重 Gross Weight (kg)	10.6



控制面板 Control Panel



电源
Power



湿度设定
Humidity +/-

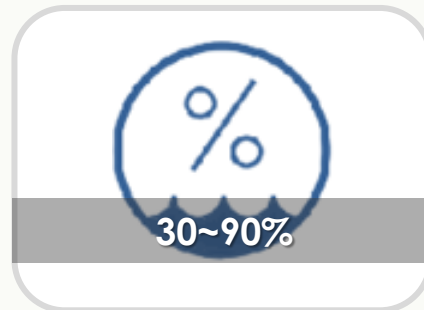


定时
Timer

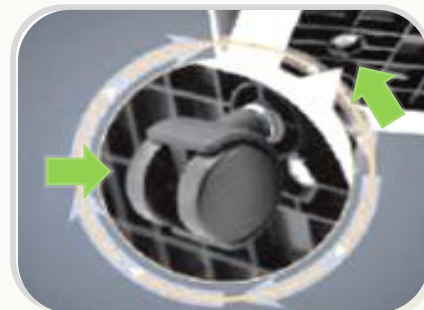


风速
Speed

产品设计 Close Look



湿度设定 Humidity Setting



万向脚轮 Castors



悬挂安装架 Hanging Rack



水箱 Water Tank



收纳设计 Storage Design



P D - E C E
电子按键 Electronic Control

除湿量 Capacity (30°C, 80%)
 10, 12 L/Day
湿度Humidity: 30%~90%

除湿量 Capacity (30°C, 80%)
 10, 12 L/Day
湿度Humidity: Auto

P D - E C M
一键开机 On/ Off Button

P D - E A R
机械旋钮 Mechanic Control

除湿量 Capacity (30°C, 80%)
 10, 12 L/Day
湿度Humidity: Level 1~9, Con.

除湿量 Capacity (30°C, 80%)
 10, 12 L/Day
湿度Humidity: Auto

P D - F A M
一键开机 On/ Off Button

家用輕巧系列

Household Compact Series



除湿机 PD - P A E

Dehumidifier | PD - P A E

- *日除湿能力: 16, 25L/ Day (30℃ RH80%)
- *电子控制面板与双8显示
- *弹性湿度与模式: 30~90%, 连续, 舒适
- *24档定时器: 定时开; 定时关(独家!)
- *高质量压缩机, 静音运转、低震动无嗡鸣
- *适用温度: 5~32℃, 低温自动除霜
- *安全警示: 满水自动停机, 搭配嗡鸣警示
- *可加购: 银离子滤网、 60cm水管

- *Water Removal: 16, 25L/Day (30℃ RH80%)
- *Electronic control panel with 7-segment display
- *Humidity Setting: 30~90%, CO, AU
- *24 hour timer: Auto-on or auto-off with simplest setting.
- *Silent compressor: Stable operation with low vibration
- *Applicable Environment: 5~32Φ℃ . (<5℃ Self-Defrost)
- *Safe Alarm: Unit stops operating while the tank is full
- *Optional: Ag-Ion sterilizing filter, UVC light, 60cm pipe

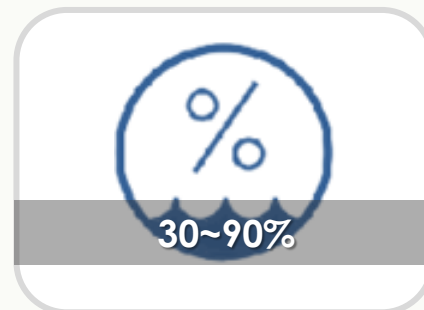


产品型号 Model	PD-PAE / PD-PAM1			
日除湿量 Capacity (L/Day, 30℃,RH80%)	10	12	16	20
日除湿量 Capacity (L/Day, 27℃,RH60%)	5	6	8	10
冷媒种类 Refrigerant Type	R134a	R134a	R134a	R134a
水箱容量 Water Tank Volume (L)	4L	4L	4L	4L
音量 Noise (dB)	42	42	42	42
产品尺寸 Unit Dimensions (W*D*H, mm)	300*239*524	300*239*524	300*239*524	300*239*524
包装材积 Packing Dimensions (mm)	328*263*545	328*263*545	328*263*545	328*263*545
装柜量 CNTR Loading (20'FT/40'GP/40'HQ)	616/ 1260/ 1260	616/ 1260/ 1260	616/ 1260/ 1260	616/ 1260/ 1260
净重 Net Weight (kg) /	11.5	11.7	13.3	14.5
毛重 Gross Weight (kg)	12.6	12.8	14.5	15.4

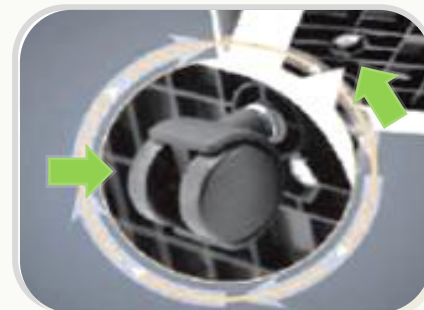
控制面板 Control Panel



产品设计 Close Look



湿度设定 Humidity Setting



万向脚轮 Castors



可清洗滤网 Washable Filter



水箱 Water Tank



一体式注塑手把，坚固、高承重
Injection Hidden Handle



电源
Power



定时
Timer



湿度设定
Humidity +/-



风速
Speed



P D - D A E
电子按键 Electronic Control

除湿量 Capacity (30°C, 80%)
10, 12, 16, 20 L/Day
湿度Humidity: 30%~90%

除湿量 Capacity (30°C, 80%)
10/ 12/ 16/ 20 L/Day
湿度Humidity: 30%~90%

P D - C A E
电子按键 Electronic Control

P D - D A R
机械旋钮 Mechanic Control

除湿量 Capacity (30°C, 80%)
10, 12, 16, 20 L/Day
湿度Humidity: Low ~ High

除湿量 Capacity (30°C, 80%)
10/ 12/ 16/ 20 L/Day
湿度Humidity: 1~9, Con

P D - C A R
机械旋钮 Mechanic Control



P D - S A M
 一键开机 On/ Off Button

除湿量 Capacity (30°C, 80%)
 10, 12, 16, 20 L/Day
湿度Humidity: Auto

除湿量 Capacity (30°C, 80%)
 10, 12, 16, 20 L/Day
湿度Humidity: 30%~90%

P D - S A E
 电子按键 Electronic Control

P D - S A N
 电子按键 Electronic Control

除湿量 Capacity (30°C, 80%)
 10, 12, 16, 20 L/Day
湿度Humidity: Level 1~9, Con.

除湿量 Capacity (30°C, 80%)
 10, 12, 16, 20 L/Day
湿度Humidity: 30%~90%

P D - S A R
 机械旋钮 Mechanic Control

快 乾 除 溼 系 列

Ultra Performance Series



除湿机 P D - V A E

Dehumidifier | P D - V A E

- *除湿能力: 40~80L/Day (30°C, RH80%)
- *5.6L防滴漏、潑濺水箱(包覆式)
- *外掛式HEPA濾網, 可達到PM2.5殺菌過濾
- *彈性湿度与模式: 30~90%, 连续, 舒适
- *75度大角度吹拂扇叶
- *电源线收纳固定杆
- *24档定时器: 定时开; 定时关(独家!)
- *适用温度: 5~32 °C, 低温自动除霜
- *安全警示: 满水自动停机, 搭配噐鸣警示
- *可加购: HEPA淨化滤网、60cm水管
- *Water Removal: 40~80L/Day (30°C RH80%)
- *5.6L water tank with full covered
- *Attachable HEPA filter at back,
- *Humidity Setting: 30~90%, CO, AU
- *75° swinging blade
- *Power cord rack for storage
- *24 hour timer: Auto-on or auto-off with simplest setting.
- *Applicable Environment: 5~32 °C. (<5 °C Self-Defrosting)
- *Safe Alarm: Unit stops operating while the tank is full
- *Optional: Ag-Ion sterilizing filter, UVC light, 60cm pipe



产品型号 Model	PD-VAE			
日除湿量 Capacity (L/Day, 30°C,RH80%)	40	50	60	80
日除湿量 Capacity (L/Day, 27°C,RH60%)	20	25	30	40
冷媒种类 Refrigerant Type	R410a	R410a	R410a	R410a
水箱容量 Water Tank Volume (L)	5.6L	5.6L	5.6L	5.6L
音量 Noise (dB)	<65	<65	<65	<65
产品尺寸 Unit Dimensions (W*D*H, mm)	400*310*645	400*310*645	400*310*645	400*310*645
包装材积 Packing Dimensions (mm)	450*370*590	450*370*590	450*370*590	450*370*590
装柜量 CNTR Loading (20'FT/40'GP/40'HQ)	237/ 492/ 492	237/ 492/ 492	237/ 492/ 492	237/ 492/ 492
净重 Net Weight (kg) /	22.0	23.5	24.5	26.5
毛重 Gross Weight (kg)	24.0	25.5	26.5	28.5

控制面板 Control Panel



电源
Power



风速
Speed

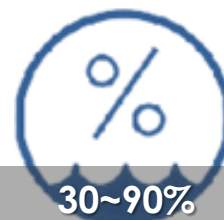


湿度设定
Humidity +/-

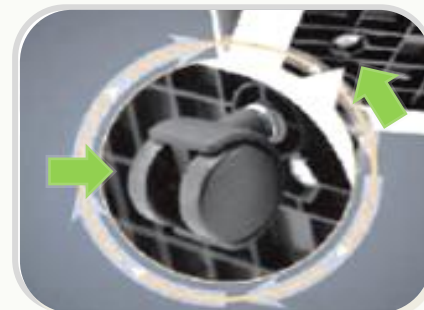


定时
Timer

产品设计 Close Look



湿度设定 Humidity Setting



万向脚轮 Castors

(选配) HEPA滤网
(Optional) HEPA Filter



电线缠绕架
Power Cord Rack



水箱 Water Tank



多角度叶片
Blades and Knob



P D - H A E
電子按鍵 Electronic Control

除湿量 Capacity (30°C, 80%)
40, 50, 60 L/Day
湿度Humidity: 30%~90%

除湿量 Capacity (30°C, 80%)
30, 40, 50, 60, 70 L/Day
湿度Humidity: 30%~90%

P D - L A E
電子按鍵 Electronic Control

P D - G A E
電子按鍵 Electronic Control

除湿量 Capacity (30°C, 80%)
30 L/Day
湿度Humidity: Auto

除湿量 Capacity (30°C, 80%)
30, 40, 50, 60, 70 L/Day
湿度Humidity: 30%~90%

P D - L A R
機械旋鈕 Mechanic Control

母婴静音除湿机

Product Table (Lite)

高温除湿量 Capacity: 10~12 L/Day

- 轻巧迷你机身 Super light and mini
- 加大水箱容量 Extra water tank volume
- 超静音运转<42分贝 Truly silent unit <42dB



型号	PD-KAE PD-KBE	PD-JAE PD-JAM	PD-ECE/ M/ R (PD-EAM)	PD-FAM
除湿量 Capacity (30°C 80%)	5~12 L/Day	10 L/Day	10~12 L/Day	10~12 L/Day
冷媒 Refrigerant	R134a	R134a	R290/ R134a	R134a
水箱 Water Tank	2.5L	4L	1.6L	1.8L
尺寸 Dimension (W*D*H, mm)	290*240*414	314*180*482	312*243*417 (312*235*417)	327*240*426
包装 Package (W*D*H, mm)	330*284*444	344*210*443	334*278*443 (334*260*443)	337*250*443
装柜量 CNTR (20'/40'/40'HQ)	700/ 1455/ 1737	900/ 1875/ 2203	705/1445/1723 (755/1565/1874)	765/ 1575/ 1886
净重 N.W. (kg)	7~9	9.5~10	10.1~10.6	10.1~10.6
毛重 G. W. (kg)	8~10.5	10.6~11.1	11~11.5	11~11.5
认证 Certificate	ETL(R134a)	CB(R134a)	CE,GS,CB(R290)	CCC(R134a)

家用轻巧除湿机

Product Table (Standard)

制冷&制热能力 Capacity: 7,000~10,500 BTU

- 冷热出风口可互换 Exchangeable Air Outlets
- 风管收纳保护 Built-In Hose Storage Design
- 三合一多功能产品 Multiple Functions 3-in-1



型号	PD-PAE	PD-DAE	PD-CAE	PD-SAE
除湿量 Capacity (30°C 80%)	10~20L/Day	10~20L/Day	10~20L/Day	10~20L/Day
冷媒 Refrigerant	R134a	R290/ R134a	R290/ R134a	R290/ R134a
水箱 Water Tank	4L	2.2L	2.1L	2.3L
尺寸 Dimension (W*D*H, mm)	300*239*524	365*220*508	310*220*490	365*220*490
包装 Package	328*263*545	403*258*530	340*253*526	395*253*530
装柜量 CNTR (20'/40'/40'HQ)	616/1260/1260	504/ 1064/ 1318	1179/ 1476	524/1080/1341
净重 N.W. (kg)	11.5~14.6	11.5~14.5	11.5~13.8	11.1~13.7
毛重 G. W. (kg)	12.6~15.4	12.6~15.4	12.6~14.8	12.2~14.8
认证 Certificate	N/A	CE,GS,CB(R290)	CE,GS,CB(R290)	CE,GS,CB(R290)

快干除湿机

Product Table (Ultra)



型号	PD-WAE	PD-GAE	PD-HAE	PD-LAE	PD-VAE
除湿量 Capacity (30°C 80%)	20~35L/ Day	30L/ Day	40~60L/ Day	30~70L/ Day	40~80L/ Day
冷媒 Refrigerant	R410a	R290/ R410a	R290/ R410a	R290/ R410a	R410a
水箱 Tank Volume	4.8L	4.5L	6.5L	7.2L	5.6L
音量 Noise (dB)	46~50	46~48	48~50	46~58	<65
尺寸 Dimension (mm)	408*268*574	360*246*506	405*268*632	481*286*628	400*310*645
包装尺寸 Package (W*D*H, mm)	496*356*620	398*288*535	445*320*666	517*330*665	450*370*695
装柜量(20'/40'/40'HQ) Container Loading	216/ 459/ 612	464/ 952/ 952	276/ 561/ 742	234/ 483/ 634	237/ 492/ 492
净重 Net Weight (kg)	17~18.5	18	18.6~19.5	19.5~23.8	22.0~26.5
毛重 Gross Weight (kg)	18.3~20	19.2	19.9~21.0	21~25.3	24.0~28.5
安規認證 Certificate	ETL(R410)	CE, GS(R290) CB(R410)	CE, GS, CCC(R290) CE, GS, CCC(R410)	CE, GS, CCC(R290) CE, GS, CCC(R410)	N/A