



中山联昌电器有限公司
Zhongshan Lianchang Co., Ltd.

中山联昌电器有限公司

广东省中山市五桂山长逸路23号长命水工业区B区厂房 528458
Factory House, Zone B, Changmingshui Industrial Zone, No.23,
Changyi Road, Wuguishan, Zhongshan City, Guangdong, China
(Postcode: 528458)



(亚马逊)
Amazon

United International Co., Ltd.

12F, No. 520, Section 4, Ren-Ai Road, Taipei, Taiwan
官网: Website <http://united-airmaster.com>
阿里巴巴: Alibaba <http://airmaster.en.alibaba.com>



(阿里巴巴)
Alibaba



Air master



中山联昌电器产品型录

UNITED INTERNATIONAL PRODUCTS

2001年 于中山市设立中山联昌电器 2021年 中山联昌电器展开新的开始

在中山市五桂山建立全新的生产基地, 统合上游物料、成品组装、仓储出货, 优化生产管理动线以提升服务效率, 打造更完整的中山联昌工业园区。

2021.Oct: A New Leap in Business:

- Zhongshan Lianchang starts a new page in business.
We build and move to a new Manufacturing Site!
- Zhongshan Lianchang Industrial Park combines component sites, assembly factory and ware houses together. The compact supply network could strengthen horizontal and vertical communication, enlarging the producing efficiency.
- We've set some great milestones in the past 20 years, and we look forward to achieve a better success in the future.

中山联昌, 专业家电代工制造商

移动空调x除湿机x空气清净机x净水机, 移动式生活家电的研发领先者
我们期望, 联同所有合作伙伴繁荣昌盛
创新、质量、稳定, 二十年的坚持, 始终如一

+专业研发代工

中山联昌电器是来自台湾的专业研发团队, 从1995年开始, 在广东OEM/ODM专业代工市场稳健扎根。中山联昌自诩为空气大师[Air Master], 解决生活中的空气问题: 温度[冷/暖 移动空调]、湿度[除湿机/加湿机]、洁净度[空气清净机]以及清新度[净化芳香机]。

+未来概念创新

活化思考才能持续推出成功产品。质感复合性产品是我们这个阶段的发想方向, 一机满足多样潜在需求; 极简繁复的选择与操作, 让智能生活再进步, 升级为单纯生活。

+永续经营观

联昌追求空气与水资源的处理、再利用; 产品设计的方针是减少破坏[空间与环境]、增加共享性[多用途]、改善效率[节能再利用], 我们期许跟社会、环境永续发展与经营。

United International Co., Ltd. x Zhongshan LianChang Co., Ltd.

- Experienced Manufacturer in Portable Home Appliance
- Product Line: Portable Air Conditioner, Dehumidifier, Air Purifier
- Zhongshan LianChang, one of the professional Taiwan ODM/OEM manufacturers in China. Our experienced R&D team from Japan and Taiwan home appliance industry build us an "AirMaster", specialize in Portable Air Conditioners, Dehumidifiers and Air Purifiers. We are keen to create SMART compound products satisfying users' multi-needs. We want to follow users' lifestyle, simplifying complex operating procedures in life.
- Zhongshan LianChang believes in the balance and fairness of creatures on earth. Thus, we utilize the reuse and recycle of Air and Water resource in pursuit of the sustainable developments in business and environment.



代工贴牌/内销合作/跨境电商(阿里巴巴/亚马逊) OEM & ODM / Cross-Border Ecommerce (ALIBABA / AMAZON)

+为世界代工-[客制化能力 深广的知识]

中山联昌向每位客户负责,对每台产品用心,为了了解不同国家产品需求,我们钻研各国的环境、法规与文化。透过多年的努力,我们成功将产品推广至全世界各个角落。
我们承诺,中山联昌电器有专业能力客制化 (OEM/ODM) 提供最合适需求的产品

ODM/ OEM Up-to-Date products

To align with customers' growing needs, we dedicate ourselves to investigating environment, product legislation and culture of various countries. Now we successfully expand our business globally. We commit to providing right products to the right place.

+专利技术与创新概念-[科技应用 活化新品]

联昌电器的核心竞争力在于研发与创新,联昌拥有30种以上专利:产品发明、机构重组、功能创新及外观造型,保障技术领先;我们也重视科技应用,获当地政府认可为高新技术企业。
新品的推出是中山联昌运转的活力,融合各文化美学设计的多变外观,团队合作发想出的结构与概念,确保产品线持续更新与扩大。

Dynamic Innovation Capability

The core competitive advantage of Zhongshan LianChang is the innovating capability. Our R&D department developed reliable products each year, therefore, we've owned over 30 patents in China ranging from invention, utility and design.

+多国产品认证-[质量稳定 安全合格]

中山联昌通过多项测试与检验,取得各国产品安规证书,与能效、环保认证,适用国家涵盖美、欧、亚、澳、北非、中东等地。
联昌多款合格认证产品,省去您冗长检验、登录时间与成本,帮助快速进、出口;我们亦提供专业知识辅助,协助新认证申请与取得

Multinational Certified & Approved

Certified by over 50 countries, we promise to provide safe and approved products without lengthy applying and inspecting process.

Certificate:

CB/ CE/ GS/ PCT/ cETLus/ CCC/ BSMI/ SASO-ICCP ; Energy Star/ ROHS/ WEEE

产品组合 Product Mix



产品研发理念 Problem We Solve & Product We Make

中山联昌产品研发的核心理念从各个层面发想，多元的切入点，才能不断设计出原创且符合用户需求的产品：

解决问题→产品价值提升→用户体验与生活

Our product developing concept and purpose based on various perspectives, to ensure our products continuously meet users' need:

From Problem → Product Value → User Experience



移动空调

• Portable Air Conditioner:

Cooling and Heating function to adjust the temperature.

Dehumidifying function to reduce the moisture in air.

Ventilating to drive the air flow refreshing the ambient air.



温度调节 - 移动空调(制冷)

HOW & WHY TO USE PORTABLE AIR CONDITIONER



弹性达到舒适的温度

媲美柜机的高冷量与双马达加大风量,可以快速带动室内空气流。具有即插即用、免安装、不滴漏、轻便移动等特性,不管在(室内)厨房、卧室、浴厕或(室外)阳台、院子晾衣服都可以使用!

Easily Adjust the Indoor Temperature

Powerful cold air with strong air volume efficiently lead the air flow moving around the ambience, and cool down instantly. With theses features: "Plug to use", "Simple install", "No Drainage" and "Easy to move", users can use either indoor(Toilet/ Bedroom/ Kitchen) or outdoor(Yard/ Balcony) anytime.

温度对工作效率的影响

经研究证实、环境温度在25-26度时,可以达到最大的工作绩效!体温一高,人就会烦躁无法专注与思考,疲劳度也大增。夏天时使用移动空调可加强中央空调不足处;下班断电时也能针对加班员工使用,使用性多元且方便

Room Temperature and Productivity (Working Efficiency)

Proved by reports, changes in room temperature affect the working performance. The highest productivity is at temperature of around 25-26°C.

Portable ac can strengthen the cooling performance of central air conditioning system in extreme summer days, or use for working overtime staffs in power off office.



湿度调节 - 移动空调(除湿)

HOW & WHY TO USE PORTABLE AIR CONDITIONER

强效温度控制

日除湿量可达50~65L,可有效取代市面大多数除湿机!室内跟人体都干爽、舒适。

一机多用、跨季使用,除湿效率惊人,简单且直觉使用。

Efficiently Remove the Moisture

Remove 50~65Liters of water per day, beat most of the dehumidifiers in market. Make users and the ambience cool and dry, comfortable all the time.

Unnecessary to buy additional unit, save the space and the cost. Powerful dehumidifying with simplest control.

过高湿度的影响

太过潮湿易导致人体呼吸道跟皮肤过敏,空气中也容易滋生细菌、霉菌,造成食物腐败、衣物器具发霉。为了使用者的健康与生活的舒适,建议适当使用除湿功能!

Too Much Humidity Cause Problems

Damp and moisture indoor may generate molds and mildew, triggering allergic symptoms on skin or respiratory system making the food, furniture and clothes collapse easily. The moisture penetrates into the wall hurts the building as well.

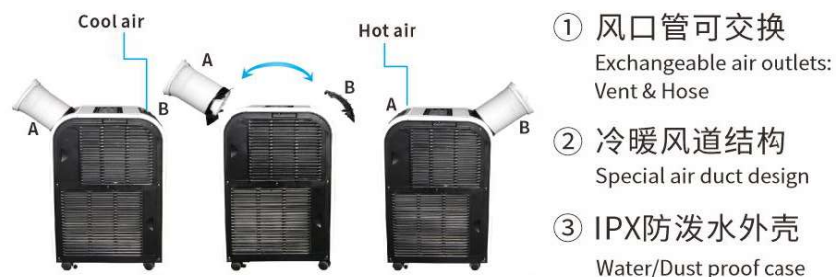
移动空调的五种好处 5 Reasons to Have Portable AC

- 极简安装, 轻松插电即用
- 好推好移动, 共享使用好经济
- 免关门直吹制冷, 煮饭、做家务都清凉舒爽
- 自动蒸发免排水、不怕滴漏
- IPX防水设计, 放置室外好安静
- Simplest installation, just plug to use
- Movable unit, can share to use among rooms
- Open-space operation, use without closing door
- Self-Evaporation without draining or leaking
- Waterproof design (IPX), outdoor using available

独家特点 Our Unique Features

- 内藏风道: 好看好收纳省出空间
- 冷热出风口交换: 充分利用冷暖风
- 防泼溅水设计: 四季都可放室外使用, 降噪音, 省空间
- Built-In Duct: Easy to store, Save space, Better looking
- Exchangeable air outlets: Efficiently use the cold and hot air in multi-ways
- Waterproof design(IPX): Durable water and dust proof cases and mechanism

独家变型空调(室内冷暖多用) Multi-Application AC



特制风口结构, 使用者只要将扇叶风口与排风管对调, 轻松从「吹冷气、排热风」转换成「吹热风、排出冷风」。搭配防泼水与防沙尘外, 还可以将机台放置室外或阳台, 只接管导入冷风, 仿效一般室外机, 极安静又省空间!

特殊遥控配件: 机台放置外面、可加装D型窗格板做室内控制板, 板上附按键与讯号接收头, 美观又方便!

Our 3in1 Series has special exchangeable air outlets, users can use either cold or hot air by exchanging the air vent and exhaust hose. Moreover, the IPX water/ dust proof case enable users putting unit outdoor and lead the cold air into ambience through the hose. The portable ac changes to be a outdoor unit, saving space and lowering noise for users!

*Convenient accessory: Adapt the D type window kit on wall, users can control through panel or the remote controller.







产品特点介绍

- 最大制冷能力:24,000 BTU/H

-双向显示:前方特制增设双8显示

-可选配:自动摆风、Wi-Fi

-制冷、除湿、通风:制热需加四通阀

-弹性温度控制 (°C或°F可择一显示)

-触摸屏控制与LED双8显示

-双涡轮马达,快速带动空气流动

-三档风速自由切换:高-中-低

-人性化程控:自动/睡眠/童锁

-24档定时器:定时开、定时关(独家!)

-自动蒸发技术:免排水、不滴漏、强省电

-90~150L/日的强大除湿力,满水自动停机

-可加购配件窗格版,能效大提升

-另有金属外壳造型同款PC-MMS
- Max. Cooling Capacity: 24,000 BTU/H

-Dual Display on both top panel and in the front

-Optional: Auto-Swing function, Wi-Fi

-Cooling, (Heating), Dehumidifying, Ventilating

-Flexible Humidity Setting (°C or °F available)

-Touch Pad with LED display (7 segment)

-Two powerful motors lead the ambient airflow

-3-Step Fan Speed: High-Middle-Low

-User-Friendly Program: Auto/ Lock/ Sleep

-24Hour Timer: Auto-On / Auto-Off (Unique!)

-Self-Evaporating: No Draining and No Dripping

-Powerful dehumidify capacity: 90~150L/Day

-Could Adapt to Accessory "Window Kits"

-Similar design in metal case: PC-MMS

产品型号 Model	PC53-MMA	PC65-MMA	PC70-MMA*
制冷能力 (W/BTU) Cooling Capacity	5300W/18000BTU	6500W/22000BTU	7000W/24000BTU
制热能力 (W/BTU) Heating Capacity	(5300W/18000BTU)	(6500W/22000BTU)	(7000W/24000BTU)
日除湿量 (30°C,RH80%) Dehumidification	90L/Day	120L/Day	150L/Day
冷媒种类 Refrigerant Type	R290/ R410a	R290/ R410a	R410a
音量 (dB) Noise	65	65	65
产品尺寸 (mm) Unit Dimensions	W541 x D702 x H1142	W541 x D702 x H1142	W541 x D702 x H1142
包装材积 (mm) Packing Dimensions	W590 x D775 x H1290	W590 x D775 x H1290	W590 x D775 x H1290
装柜量 (20'/40'/40'HQ) Container Loading	25/55/119	25/55/119	25/55/119
净重 (kg) Net Weight	53	53.5	54
毛重 (kg) Gross Weight	61	61.5	62

*24,000BTU仅限于部分无能效管制国家
 *24,000BTU in countries without energy efficiency regulation

*制热为选配功能,需加四通阀
 *Optional Heating function: add a 4-way valve





独创三面出风空调

Multi-Direction AC | PC-SMA





产品特点介绍

- 最大制冷能力:15,000 BTU/H
 -三面环绕式出风口,无死角吹拂
 -颜值革新,超流线外观与触感
 -触摸屏控制与LED双8显示
 -制冷、(选配制热)、除湿、通风
 -弹性温度控制 (°C或°F可择一显示)
 -可自动摆风,双层叶片带动气流
 -三档风速自由切换:高-中-低
 -人性化程控:自动/睡眠/童锁
 -24档定时器:定时开、定时关(独家!)
 -自动蒸发技术:免排水、不滴漏、强省电
 -50~65L/日的强大除湿力,满水自动停机
 -特色风管收纳设计与包装
 -可加购配件窗格版,效能大提升

-Max. Cooling Capacity:15,000 BTU/H
 -Surrounding air outlet, send the breeze all around the ambient without blocking
 -Cooling, (Heating), Dehumidifying, Ventilating
 -Flexible Humidity Setting (°C or °F available)
 -Touch Pad with LED display (7 segment)
 -Two powerful motors lead the ambient airflow
 -3-Step Fan Speed: High-Middle-Low
 -User-Friendly Program: Auto/ Lock/ Sleep
 -24Hour Timer: Auto-On / Auto-Off (Unique!)
 -Self-Evaporating: No Draining and No Dripping
 -Powerful dehumidify capacity: 50~65L/Day
 -Special exhaust hose packaging design in unit
 -Could Adapt to Accessory "Window Kits"

产品型号 Model	PC35-SMA	PC40-SMA	PC44-SMA*
制冷能力 (W/BTU) Cooling Capacity	3500W/12000BTU	4000W/14000BTU	4400W/15000BTU
制热能力 (W/BTU) Heating Capacity	(3500W/12000BTU)	(4000W/14000BTU)	(4400W/15000BTU)
日除湿量 (30°C,RH80%) Dehumidification	60L/Day	70L/Day	75L/Day
冷媒种类 Refrigerant Type	R290/ R410a	R290/ R410a	R290/R410a
音量 (dB) Noise	65	65	65
产品尺寸 (mm) Unit Dimensions	W335 x D538 x H765	W335 x D538 x H765	W335 x D538 x H765
包装材积 (mm) Packing Dimensions	W413 x D608 x H874	W413 x D608 x H874	W413 x D608 x H874
装柜量 (20'/40'/40'HQ) Container Loading	100/210/313	100/210/313	100/210/313
净重 (kg) Net Weight	30.5	31	31.5
毛重 (kg) Gross Weight	34	34.5	34.5

*15,000BTU仅限于部分无能效管制国家
 *15,000BTU in countries without energy efficiency regulation

*制热为选配功能,需加四通阀
 *Optional Heating function: add a 4-way valve



电源
Power



风速
Speed



定时
Timer



功能
Mode



摆风
Swing



睡眠
Sleep



LED触摸屏 LED Touch Pad



手把(顶部) Handles(Top)



自动摆风 Swing(Vertical)



双滤网 Two Filters



三面U型出风口
All-Around Air Outlet (U-Shaped)



美形轻巧空调 PC-PMA

Aesthetic Compact AC | PC - PMA





产品特点介绍

- 制冷能力:5,000~9,000 BTU/H
- 自动摆风,快速带动循环气流
- 顶部触摸屏控制与双8显示
- 单冷空调:制冷、除湿
- 三档风速自由切换:高-中-低
- 人性化程控:自动/睡眠/童锁
- 24档定时器:定时开;定时关(独家!)
- 自动蒸发技术:空调免排水、不怕滴漏、散热强省电
- Cooling Capacity: 5,000~9,000 BTU/H
- Auto-Swing: efficiently runs the cool air cycle
- Touch Pad on top with 7-Segment display
- Cooling, Dehumidifying
- 3-Step Fan Speed: High-Middle-Low
- User-Friendly Program: Auto/ Lock/ Sleep
- 24Hour Timer: Auto-On / Auto-Off (Unique!)
- Self-Evaporating Technique: No Draining and No Dripping, Power-Saving

欧洲规格 EU standard

产品型号 Model	PC20-PMA	PC26-PMA
制冷能力 (W/BTU) Cooling Capacity	2000W/7000BTU	2600W/9000BTU
日除湿量 (30°C,RH80%) Dehumidification	30L/Day	35L/Day
能源因子值 EER (W/W)	2.61	2.61
风量 Air Volume	250m³/h	250m³/h
冷媒种类 Refrigerant Type	R290/ R410a	R290/ R410a
音量 (dB) Noise	<65	<65
产品尺寸 (mm) Unit Dimensions	W310*D340*H715 (mm)	
包装材积 (mm) Packing Dimensions	W360*D390*H885 (mm)	
装柜量 (20'/40'/40'HQ) Container Loading	176/376/569	
净重 (kg) Net Weight	23.5	23.5
毛重 (kg) Gross Weight	25.5	25.5

美国规格 USA DOE standard

Model	PC5-PMA	PC6-PMA	PC7-PMA
Cooling Capacity	5,000BTU	6,000BTU	7,000BTU
Dehumidification (30°C, RH80%)	20L/Day	25L/Day	30L/Day
Combined Energy Efficiency Ratio CEERSD	7.54	8.42	4.56
Air Volume	150CFM	150CFM	150CFM
Refrigerant Type	R410a	R410a	R410a
Noise (dB)	<65	<65	<65
Unit Dimensions	W310 x D340 x H715(mm)		
Packing Dimensions	W360 x D390 x H885(mm)		
Cont. Loading (20'/40'/40'HQ)	176/376/569		
Net Weight (kg)	23.5	23.5	24.5
Gross Weight (kg)	25.5	25.5	26.5



电源
Power



风速
Speed



定时
Timer



功能
Mode



摆风
Swing



睡眠
Sleep



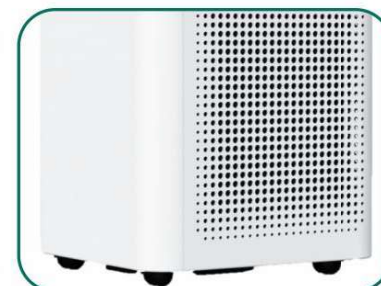
LED触摸屏 LED Display



背部接管排风 Exhaust at Back



自动摆风 Swing(Vertical)



造型格栅 Simple Grille



背部与侧面双滤网
Two Filters (Back & Side)



Model	PC-MMA	PC-SMA
制冷能力 (W/BTU) Cooling Capacity	5,300~7,000W	3,200~4,400W
制热能力 (W/BTU) Heating Capacity	18,000~24,000BTU	11,000~15,000BTU
除湿能力 (30°C) Dehumidification	90~150L	60~75L
风量 (m3/H) Air Volume	950	360~450
冷媒种类 Refrigerant	(EU)R290/ R410a	(EU)R290/ R410a
音量 Noise (dB)	65	65
尺寸 (mm) Dimensions	W541 x D702 x H1142	W335 x D538 x H765
包装尺寸 (mm) Packaging	W590 x D775 x H1290	W413 x D608 x H874
装柜量 (20'/40'/40'HQ) CNTR Loading	25/55/119	100/210/315
净重 (kg) Net Weight	53~54kg	30.5~31.5kg
毛重 (kg) Gross Weight	61~62kg	34~34.5kg
安规认证 Certificate	N	N



Model	PC-PMA
制冷能力 (W/BTU) Cooling Capacity	2,000~2,600W
制热能力 (W/BTU) Heating Capacity	7,000~9,000BTU
除湿能力 (30°C) Dehumidification	30~50L
风量 (m3/H) Air Volume	250
冷媒种类 Refrigerant	(EU)R290/ R410a
音量 Noise (dB)	<65
尺寸 (mm) Dimensions	W310 x D340 x H715
包装尺寸 (mm) Packaging	W360 x D390 x H885
装柜量 (20'/40'/40'HQ) Container Loading	176/376/569
净重 (kg) Net Weight	23.5kg
毛重 (kg) Gross Weight	25.5kg
安规认证 Certificate	N



三合一空调系列
3in1 Streamlined Series

- 冷热出风口可互换
Exchangeable Air Outlets
- 风管收纳保护设计
Built-In Hose Storage Design
- 三合一多功能产品
Multiple Functions 3-in-1





产品特点介绍

- 制冷能力:7,000~15,000 BTU/H
 -增优雅电子旋钮(温度/风量)搭配触摸屏
 -冷热出风口互换设计,冷暖风多重使用
 -制冷、制热、除湿
 -弹性温度控制(°C或°F可择一显示)
 -人性化程控:自动/风速/睡眠/童锁
 -24档定时器:定时开;定时关(独家!)
 -自动蒸发技术:免排水、不滴漏、强省电
 -50~65L/日的强大除湿力,满水自动停机
 -特殊机内风管收纳设计
 -可加购件窗格版,效能大提升
 -7~10,000BTU可做轻量化机体

-Cooling Capacity:7,000~15,000 BTU/H
 -Unique Touch Pad with Electric Knobs
 -Interchangeable Air-Outlets (Blades/ Hose Adapter)
 -Cooling, Heating, Dehumidifying
 -Flexible Humidity Setting (°C or °F available)
 -User-Friendly Program: Auto/ Speed/ Lock/ Sleep
 -24Hour Timer: Auto-On / Auto-Off (Unique!)
 -Self-Evaporating: No Draining & No Dripping
 -Powerful dehumidify capacity: 50L~65L/Day
 -Special exhaust hose packaging design in unit
 -Could Adapt to Accessory "Window Kits"
 -Lite size for 7,000~10,000 BTU

产品型号 Model	PC20/26/30-AMH2	PC26/30/35/40-AMH	PC44-AMH
制冷能力 (W/BTU) Cooling Capacity	2000-2600-3000W 7000-9000-10000BTU	2600-3000-3500-4000W 9000-10000-12000-14000BTU	4000*W 15000*BTU
制热能力 (W/BTU) Heating Capacity	2000-2600-3000W 7000-9000-10000BTU	2600-3000-3500-4000W 9000-10000-12000-14000BTU	4000*W 15000*BTU
日除湿量 (30°C,RH80%) Dehumidification	30-35-50L	50-55-60-65L	65L
冷媒种类 Refrigerant Type	R290/R410a	R290/ R410a	R410a
音量 (dB) Noise	65	65	65
产品尺寸 (mm) Unit Dimensions	W315 x D540 x H635	W330 x D550 x H790	W330 x D550 x H790
包装材积 (mm) Packing Dimensions	W376 x D631 x H667	W401 x D636 x H844	W406 x D636 x H844
装柜量 (20'/40'/40'HQ) Container Loading	162/333/444	102/212/318	100/212/318
净重 (kg) Net Weight	26.5-27.5-28.5	28.5-29.5-30.5	31
毛重 (kg) Gross Weight	28.5-29.5-30.5	30.5-31.5-32.5	33

*15,000BTU仅限于部分无能效管制国家
 *15,000BTU in countries without energy efficiency regulation
 *本系列具有CE & GS(R290, R410a),CCC(R290, R410a)认证
 *This series is CE & GS(R290, R410a), CCC(R290, R410a) certified



独特电子旋钮 Conditioning Knob



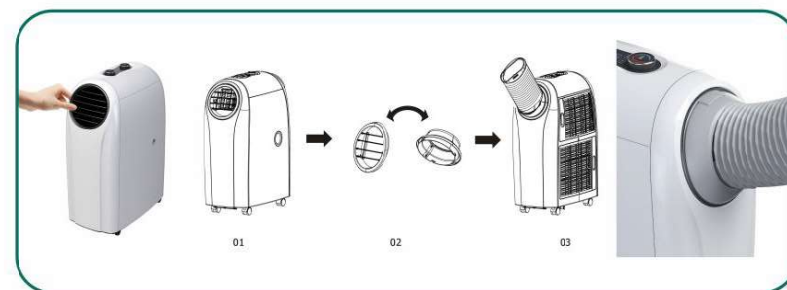
流线造型 Streamlined Case



风管收纳 Internal Hose Storage



双滤网 Two Filters



冷热出风口互换
Interchangeable Air Outlets (Cold/Hot)



电源
Power



风速
Speed



定时
Timer



功能
Mode



摆风
Swing



睡眠
Sleep



PC - AMK

LED触摸屏 / LED Touch pad

- 产品尺寸 Product Size
W300*D505*H775
- 包装尺寸 Package Size
W330*D550*H815
- 装柜量 Cntr.(20'/ 40'/ 40'HQ)
144/302/453



PC - AMF2

电子按键 / Electronic Control

- 产品尺寸 Product Size
W300*D507*H627
- 包装尺寸 Package Size
W330*D560*H660
- 装柜量 Cntr.(20'/ 40'/ 40'HQ)
213/444/591



PC - AMF

电子按键 / Electronic Control

*PC-AM1F 触摸屏/ Touch Pad

- 产品尺寸 Product Size
W300*D550*H760
- 包装尺寸 Package Size
W330*D580*H815
- 装柜量 Cntr.(20'/ 40'/ 40'HQ)
140/288/430



PC - AME

电子按键 / Electronic Control

*PC-AM1E 触摸屏/ Touch Pad

- 产品尺寸 Product Size
W300*D550*H760
- 包装尺寸 Package Size
W330*D580*H815
- 装柜量 Cntr.(20'/ 40'/ 40'HQ)
144/288/430



PC - AME2

电子按键 / Electronic Control

- 产品尺寸 Product Size
W300*D526*H624
- 包装尺寸 Package Size
W330*D560*H660
- 装柜量 Cntr.(20'/ 40'/ 40'HQ)
213/444/591



PC - AMD

电子按键 / Electronic Control

- 产品尺寸 Product Size
W300*D505*H778
- 包装尺寸 Package Size
W330*D550*H815
- 装柜量 Cntr.(20'/ 40'/ 40'HQ)
144/302/453



PC - AMD2

电子按键 / Electronic Control

- 产品尺寸 Product Size
W300*D480*H630
- 包装尺寸 Package Size
W330*D510*H660
- 装柜量 Cntr.(20'/ 40'/ 40'HQ)
234/483/643



PC - AMB

电子按键 / Electronic Control

*PC-AM1B 触摸屏/ Touch Pad

- 产品尺寸 Product Size
W300*D505*H778
- 包装尺寸 Package Size
W330*D550*H815
- 装柜量 Cntr.(20'/ 40'/ 40'HQ)
144/302/453



PC - AMB2

电子按键 / Electronic Control

- 产品尺寸 Product Size
W300*D480*H630
- 包装尺寸 Package Size
W330*D510*H660
- 装柜量 Cntr.(20'/ 40'/ 40'HQ)
234/483/643



PC - AMA

电子按键 / Electronic Control

- 产品尺寸 Product Size
W300*D486*H740
- 包装尺寸 Package Size
W330*D540*H780
- 装柜量 Cntr.(20'/ 40'/ 40'HQ)
221/458/462



轻巧空调系列 Compact Series

- 三合一多功能产品
Multiple Functions 3-in-1
- 风管收纳保护设计
Built-In Hose Storage Design
- 特制回风接管配件
Special Return Airway Cover





产品特点介绍

- 制冷能力: 7,000~10,000 BTU/H
 -制冷、除湿
 -触摸屏控制与双8显示
 -轻巧机体设计, 省空间、不占位
 -单风轮结构, 大幅降低噪音与重量
 -可自动摆风, 双层叶片带动气流
 -人性化程控: 自动/风速/ 睡眠/ 童锁
 -24档定时器: 定时开; 定时关(独家!)
 -自动蒸发技术: 免排水、不滴漏、强省电
 -30~55L/日强大除湿力, 满水自动停机
 -特殊机内风管收纳设计, 包装大减量
 -加购窗格版、回风罩配件, 效能大提升

-Cooling Capacity: 7,000~10,000 BTU/H
 -Cooling, Dehumidifying
 -Touch Pad with 7-Segment display
 -Compact one-piece-formed design
 -Single motor mechanism, more quiet and lighter weight
 -Double layer blades, with Auto-Swing
 -User-Friendly Program: Auto/ Speed/ Lock/ Sleep
 -24Hour Timer: Auto-On / Auto-Off (Unique!)
 -Self-Evaporating : No Draining & No Dripping
 -Powerful dehumidify capacity: 30L~55L/Day
 -Special exhaust hose packaging design in unit
 -Could Adapt to Accessory "Window Kits", "Return Airway Cover" to improve cooling efficiency.

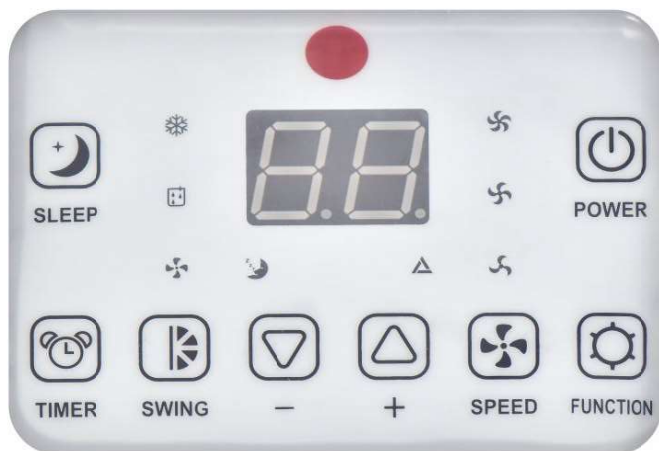
产品型号 Model	PC20-KMH	PC26-KMH	PC30-KMH
制冷能力 (W/BTU) Cooling Capacity	2000W/7000BTU	2600W/9000BTU	3000W/10000BTU
日除湿量 (30°C,RH80%) Dehumidification	30L/Day	50L/Day	55L/Day
冷媒种类 Refrigerant Type	R290/ R410a	R290/ R410a	R410a
音量 (dB) Noise	63	65	65
产品尺寸 (mm) Unit Dimensions	W360 x D480 x H490	W360 x D480 x H490	W360 x D480 x H490
包装材积 (mm) Packing Dimensions	W448 x D569 x H570	W448 x D569 x H570	W448 x D569 x H570
装柜量 (20'/40'/40'HQ) Container Loading	202/420/420	202/420/420	202/420/420
净重 (kg) Net Weight	23.5	24.5	25.5
毛重 (kg) Gross Weight	25.5	34.5	27.5

*10,000BTU仅限于部分无能效管制国家

*10,000BTU in countries without energy efficiency regulation

*K系列具有CE & GS(R290, R410a), CCC(R290, R410a), CB(R410a) KC(R290, R410a)认证

*The K series is CE & GS(R290, R410a), CCC(R290, R410a), CB(R410a) KC(R290, R410a) certified



电源
Power



风速
Speed



定时
Timer



功能
Mode



温度
Temp



睡眠
Sleep



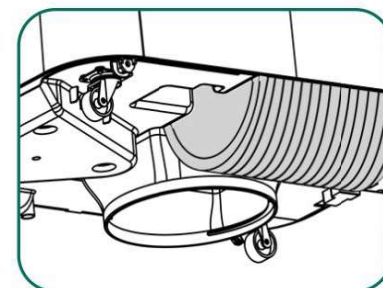
触摸屏 Touch Pad



多样性控制面板
Different Control Panels



叶片调节 Blades Knob



风管收纳 Built-In Ducts



双滤网 Two Filters



PC - BM1D

LED触摸屏 / LED Touch pad

- **产品尺寸 Product Size**
W288*D428*H625
- **包装尺寸 Package Size**
W372*D537*H700
- **装柜量 Cntr.(20'/ 40'/ 40'HQ)**
192/396/396



PC-BMF



PC-BMG



PC - BMF

LED触摸屏 / LED Touch pad

- **产品尺寸 Product Size**
W308*D483*H682
- **包装尺寸 Package Size**
W370*D607*H755
- **装柜量 Cntr.(20'/ 40'/ 40'HQ)**
171/366/366



PC - BMG

LED触摸屏 / LED Touch pad

- **产品尺寸 Product Size**
W308*D483*H695
- **包装尺寸 Package Size**
W370*D607*H755
- **装柜量 Cntr.(20'/ 40'/ 40'HQ)**
171/366/366



PC-BMD

PC-BMA

PC-BMB



PC - BMD

电子按键 / Electronic Control

- 产品尺寸 Product Size
W288*D428*H640
- 包装尺寸 Package Size
W318*D463*H660
- 装柜量 Cntr.(20'/ 40'/ 40'HQ)
270/555/730



PC - BMA

电子按键 / Electronic Control

- 产品尺寸 Product Size
W288*D428*H640
- 包装尺寸 Package Size
W318*D463*H660
- 装柜量 Cntr.(20'/ 40'/ 40'HQ)
270/555/730



PC - BMB

电子按键 / Electronic Control

- 产品尺寸 Product Size
W300*D455*H630
- 包装尺寸 Package Size
W330*D493*H660
- 装柜量 Cntr.(20'/ 40'/ 40'HQ)
243/510/680



迷你空调系列

Mini 5-in-1 Series

- 五合一多功能产品
Multiple Functions 5-in-1
- 超低能耗好省电
Power Saving, only 300w consumption
- 户外携带型轻便设计
Outdoor Portable Design





产品特点介绍

- 制冷能力:3,000 BTU/H
 -制冷、净化、除湿、加湿、通风
 -触摸屏控制与LED双8显示
 -可自动摆风, 双层叶片带动气流
 -24档定时器: 定时开; 定时关(独家!)
 -自动蒸发技术: 免排水、不滴漏、强省电
 -20~25L/日的强大除湿力, 满水自动停机
 -人性化程控: 自动/睡眠/童锁
 -可加购件窗格版, 效能大提升
 -低功耗, 可搭配车用电池或携带型电池于户外使用
- Max. Cooling Capacity: 3,000 BTU/H
 -Cooling, Purifying, Dehumidifying, Ventilating Humidifying
 -Touch Pad with LED display (7 segment)
 -Auto-Swing function for some models
 -24Hour Timer: Auto-On / Auto-Off (Unique!)
 -Self-Evaporating: No Draining & No Dripping
 -Powerful dehumidify capacity: 20L~25L/Day
 -User-Friendly Program: Auto/ Lock/ Sleep
 -Could Adapt to Accessory "Window Kits"
 -Low power consumption, could use outdoor with portable battery/ generator.

产品型号 Model	PC9-DM1H
制冷能力 (W/BTU) Cooling Capacity	900W/3000BTU
日除湿量 (30°C,RH80%) Dehumidification	25L/Day
加湿量 (ml/ Hour) Dehumidification	200ml
冷媒种类 Refrigerant Type	R290/ R410a
音量 (dB) Noise	62
产品尺寸 (mm) Unit Dimensions	W280 x D375 x H505
包装材积 (mm) Packing Dimensions	W310 x D450 x H530
装柜量 (20'/40'/40'HQ) Container Loading	376/768/955
净重 (kg) Net Weight	14.5
毛重 (kg) Gross Weight	15.7

*本系列具有CCC与CB认证, LMA/LMB仅CCC认证
 *Mini PACs are CCC and CB certified, models LMA/ LMB only CCC certified



触摸屏 Touch Pad



功能
Mode



风速
Speed



定时
Timer



摆风
Swing



温度
Temp



睡眠
Sleep



热风免接管 Hose Removable



独立除湿水箱 Water Tank



多重净化滤网(HEPA/活性炭) Multiple Filtrations(HEPA/ Carbon)



上吹式冷出风 (可接管使用)
Up-Blow Cool Air (Hose attachable)



PC - LMB

电子按键 / Electronic Control

- 产品尺寸 Product Size
W285*D380*H515
- 包装尺寸 Package Size
W330*D440*H667
- 装柜量 Cntr.(20'/ 40'/ 40'HQ)
312/648/756



PC - DM1D

LED触摸屏 / LED Touch pad

- 产品尺寸 Product Size
W280*D375*H505
- 包装尺寸 Package Size
W310*D450*H530
- 装柜量 Cntr.(20'/ 40'/ 40'HQ)
376/784/980



PC - DMF

电子按键 / Electronic Control

- 产品尺寸 Product Size
W285*D400*H508
- 包装尺寸 Package Size
W325*D438*H532
- 装柜量 Cntr.(20'/ 40'/ 40'HQ)
364/760/950



PC-DMB

PC-DMG

PC-DM2A



PC - DMB

电子按键 / Electronic Control

- 产品尺寸 Product Size
W280*D375*H505
- 包装尺寸 Package Size
W310*D450*H530
- 装柜量 Cntr.(20'/ 40'/ 40'HQ)
376/784/980



PC - DMG

电子按键 / Electronic Control

- 产品尺寸 Product Size
W280*D375*H505
- 包装尺寸 Package Size
W310*D450*H530
- 装柜量 Cntr.(20'/ 40'/ 40'HQ)
376/784/980



PC - DM2A

电子按键 / Electronic Control

- 产品尺寸 Product Size
W285*D375*H500
- 包装尺寸 Package Size
W310*D410*H530
- 装柜量 Cntr.(20'/ 40'/ 40'HQ)
408/848/1058



内藏风道系列
Built-In Duct Series

- 风管收纳设计
Built-In Duct Design
- 高效制冷与除湿
High Cooling Efficiency





产品型号 Model	PC30-02MA	PC35-02MA
制冷能力 (W/BTU) Cooling Capacity	3000W/10500BTU	3500W/12000BTU
制热能力 (W/BTU) Heating Capacity	(3000W/10500BTU)	(3500W/12000BTU)
日除湿量 (30°C,RH80%) Dehumidification	40L/Day	50L/Day
冷媒种类 Refrigerant Type	R410a	R410a
音量 (dB) Noise	65	65
产品尺寸 (mm) Unit Dimensions	W530 x D345 x H840	W530 x D345 x H840
包装材积 (mm) Packing Dimensions	W580 x D395 x H880	W580 x D395 x H880
装柜量 (20'/40'/40'HQ) Container Loading	114/240/360	114/240/360
净重 (kg) Net Weight	27.5	29.5
毛重 (kg) Gross Weight	30.5	32.5

产品特点介绍

- 最大制冷/制热能力:15,000 BTU/H
- 简约流线设计, 便于清洁维护
- 制冷、(选配制热)、除湿、通风
- 50~65L/日的强大除湿力, 满水停机
- 弹性温度控制(°C或°F可择一显示)
- 双层导风叶片, 可吹拂指定区域
- 三档风速自由切换: 高-中-低
- 人性化程控: 自动/睡眠/童锁
- 24档定时器: 定时开; 定时关(独家!)
- 自动蒸发: 免排水、不滴漏、强省电
- 特色风管收纳设计与包装
- Cooling/ Heating Capacity: 10,500~15,000 BT
- Simple and classic shape, easy to clean
- Cooling, (Heating), Dehumidifying, Ventilating
- Powerful dehumidify capacity: 50L~65L/Day
- Flexible Humidity Setting (°C or °F available)
- 2 layers of blades, lead the air cooling specific spot
- 3-Step Fan Speed: High-Middle-Low
- User-Friendly Program: Auto/ Lock/ Sleep
- 24Hour Timer: Auto-On / Auto-Off (Unique!)
- Self-Evaporating No Draining, No Dripping
- Exhaust hose storing & packing protection

产品型号 Model	PC40-02MA	PC44-02MA*
制冷能力 (W/BTU) Cooling Capacity	4000W/14000BTU	4400W/15000BTU
制热能力 (W/BTU) Heating Capacity	4000W/14000BTU)	4400W/15000BTU
日除湿量 (30°C,RH80%) Dehumidification	60L/Day	70L/Day
冷媒种类 Refrigerant Type	R410a	R410a
音量 (dB) Noise	65	65
产品尺寸 (mm) Unit Dimensions	W530 x D345 x H840	W530 x D345 x H840
包装材积 (mm) Packing Dimensions	W580 x D395 x H880	W580 x D395 x H880
装柜量 (20'/40'/40'HQ) Container Loading	114/240/360	114/240/360
净重 (kg) Net Weight	31.5	33.5
毛重 (kg) Gross Weight	34.5	36.5

*本系列仅PC-02MA持有CB认证, 01/06等型号无安规

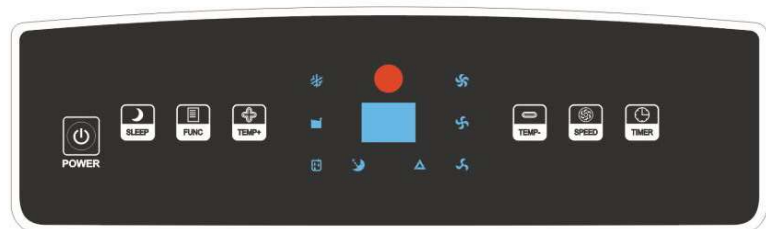
*Only PC-02MA is CB certified, models 01/ 06 are without certification

*15,000BTU仅限于部分无能效管制国家

*15,000BTU in countries without energy efficiency regulation

*制热为选配功能, 需加四通阀

*Optional Heating function: add a 4-way valve



电源
Power



风速
Speed



定时
Timer



功能
Mode



温度
Temp



睡眠
Sleep



2道导风叶片 2 Air Blades




双滤网 Two Filters



电子按键 Electronic Control



内藏风管保护
Built-In Duct Protection



PC-01MA

PC-06MI

PC-06ME



PC - 01MA

电子按键 / Electronic Control

- 产品尺寸 Product Size
W476*D358*H840
- 包装尺寸 Package Size
W540*D417*H880
- 装柜量 Cntr.(20'/ 40'/ 40'HQ)
110/232/348



PC - 06MI

电子按键 / Electronic Control

- 产品尺寸 Product Size
W476*D358*H840
- 包装尺寸 Package Size
W540*D417*H880
- 装柜量 Cntr.(20'/ 40'/ 40'HQ)
110/232/348



PC - 06M*

电子按键 / Electronic Control

- 产品尺寸 Product Size
W476*D358*H780
- 包装尺寸 Package Size
W540*D417*H880
- 装柜量 Cntr.(20'/ 40'/ 40'HQ)
110/232/348

- 特殊回风罩配件
Special Accessory: Return Airway Cover
- 室内有效降温
Efficient Lower the Ambient Temperature



回风罩设计目的 改善情况



一般单管移动空调,使用时室内气压变低(室内进风、并排出热空气到室外,造成内部空气变少)因为大气压力原理,室外的未处理空气会从缝隙涌入,使移动空调的室内降温效果较差,直吹效果比较优异。

为改善这个情况,特制可拆卸回风罩,自由选择使用时机,有单管移动空调的便利性、省空间、好移动;在极高温时切换成双管移动空调,高效率环境降温!

The easy-removable Return Airway Cover preserve both benefits of single-duct and double-ducts PAC. Use the cover to keep the air pressure balance, improving the ambience cooling efficiency in specific hot conditions; remove cover to keep unit's mobility and save indoor space.

产品内容 Contents



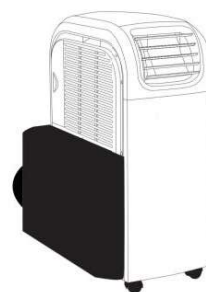
产品组装方式 How to Assemble



依序装上回风罩、风罩接口、排风管、排风管末端接口与窗隔板
Follow below orders to assemble: Return airway cover, Cover adaptor, Exhaust hose, Hose adapter and related Window kit.



适用产品系列
Applicable Series



三合一系列 3in1 Series
PC-AMA/B/E/F/K



轻巧空调 K系列,B系列
Compact PAC: K&B Series



上回风(蒸发器 冷风)限AMH2/AMP2
Evap. Return Airway only AMH2/AMP2



迷你空调 限LMA/LMB
Mini PAC: only LMA/LMB



窗格板可以维持室内密闭性,且有效排除空调制冷产生的热风。
配合使用环境,可以安装不同形式的配件。

The window kit can keep the ambience in good balance of air pressure, and efficiently lead the hot exhaust air out. Various design of window kits for different environment.

TYPE A

最短:55公分 最长:100公分
Min:55cm Max:100cm



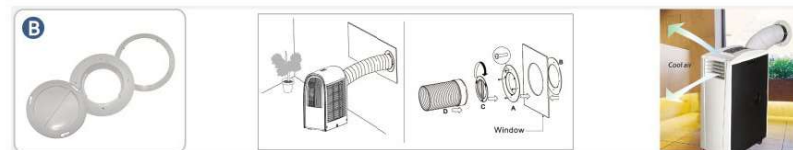
A型窗隔板的最大特点是不需在墙壁或窗上开洞,且可配合窗户设计垂直或水平安装。滑动板长度可以随窗户尺寸调整、再以螺丝锁紧,将固定住的A型窗隔板用窗户、窗框沟槽夹住即可完成安装。

The type A is unnecessary to change structure of the room, just put the Type A window kits' adjustable sliding pad vertically or horizontally to the window. Find the suitable length and fix the pads with screws, and then fit the window kit set into the widow groove.

TYPE B

开孔直径:φ140mm
Hole Diameter:140cm

螺丝孔径:φ4.5mm
Screw:φ4.5mm



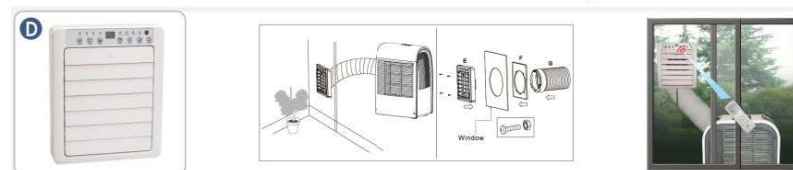
使用B/D型窗隔板时需在墙壁或玻璃窗上开孔,再将外层圆环与内层格栅环夹住墙壁/玻璃窗并以螺丝锁紧。窗隔板不使用或者不连接机台时,请盖上罩子,避免异物入侵。

To use Type B or D window kits, you have to open a hole on window or wall, and fix the inner grille ring & outer ring with screws. Cover the window kit when you remove the unit from window kit, to avoid items enter the ambience.

TYPE D

开孔直径:φ158mm
Hole Diameter:158cm

螺丝孔径:φ4.5mm
Screw:φ4.5mm



*D型窗隔板具有红外线接收器或USB接头,使用者可用遥控器或者APP远距离控制。

*Type D window kits include a red-farad receiver and a control pad, users could control directly through the unit, the window kit pad, or the remote controller.