

移 动 空 调

- **Portable Air Conditioner:**
Cooling and Heating function to adjust the temperature.
Dehumidifying function to reduce the moisture in air.
Ventilating to drive the air flow refreshing the ambience



温度调节 - 移动空调(制冷)

HOW & WHY TO USE PORTABLE AIR CONDITIONER



弹性达到舒适的温度

媲美柜机的高冷量与双马达加大风量，可以快速带动室内气流，全室降温。

具有即插即用、免安装、不滴漏、轻便移动等特性，不管在(室内)厨房、卧室、浴厕或(室外)阳台、院子晾衣服都可以使用!

Easily Adjust the Indoor Temperature

Powerful cold air with strong air volume efficiently lead the air flow moving around the ambience, and cool down instantly. With these features: "Plug to use", "Simple install", "No Drainage" and "Easy to move", users can use either indoor(Toilet/ Bedroom/ Kitchen) or outdoor(Yard/ Balcony) anytime.

温度对工作效率的影响

经研究证实，环境温度在25-26度时，可以达到最大的工作绩效! 体温一高，人就会烦躁无法专注与思考，疲劳度也大增。夏天时使用移动空调可加强中央空调不足处；下班断电时也能针对加班员工使用，使用性多元且方便!

Room Temperature and Productivity (Working Efficiency)

Proved by reports, changes in room temperature affect the working performance. The highest productivity is at temperature of around 25-26 °C.

Portable ac can strengthen the cooling performance of central air conditioning system in extreme summer days, or use for working overtime staffs in power off office.

湿度控制 - 移动空调(除湿)

HOW & WHY TO USE PORTABLE AIR CONDITIONER



强效湿度控制

日除湿量可达50~65L，可有效取代市面大多数除湿机! 室内跟人体都干爽、舒适。

一机多用、跨季使用，除湿效率惊人，简单且直觉使用

Efficiently Remove the Moisture

Remove 50~65Liters of water per day, beat most of the dehumidifiers in market. Make users and the ambience cool and dry, comfortable all the time.

Unnecessary to buy additional unit, save the space and the cost. Powerful dehumidifying with simplest control.

过高湿度的影响

太过潮湿易导致人体呼吸道跟皮肤过敏，空气中也容易孳生细菌、霉菌，造成食物腐败、衣物器具发霉。为了使用者的健康与生活的舒适，建议适当使用除湿功能!

Too Much Humidity Cause Problems

Damp and moisture indoor may generate molds and mildew, triggering allergic symptoms on skin or respiratory and making the food, furniture and clothes collapse easily. The moisture penetrates into the wall hurts the building as well.



移动空调的5种好处

- ✿ 极简单安装，轻松插电即用
- ✿ 好推好移动，共享使用好经济
- ✿ 免关门直吹制冷，煮饭、做家事都清凉舒爽
- ✿ 自动蒸发免排水、不怕滴漏
- ✿ IPX防水设计，放置室外好安静



独家特点

- ✿ 内藏风道：
好看好收纳省空间
- ✿ 冷热出风口交换：
充分利用冷暖风
- ✿ 防泼水设计：
四季都可放室外使用
降噪音



5 Reasons to Have Portable Air Conditioner

- 1) Simplest installation, just plug to use
- 2) Movable unit, can share to use among rooms
- 3) Open-space operation, use without closing door
- 4) Self-Evaporation without draining or leaking
- 5) Waterproof design (IPX), outdoor using available

Our Unique Features

- 1) Built-In Duct:**
Easy to store, Save space, Better looking
- 2) Exchangeable air outlets :**
Efficiently use the cold and hot air in multi-ways
- 3) Waterproof design(IPX):**
Durable water and dust proof cases and mechanism

硬实力空调霸主 PC-MMA

Extraordinary Performance AC | PC-MMA



移动空调新品 PC - MMA

Portable Air Conditioner | PC-MMA

- *最大制冷能力: 24,000 BTU/H
- *双向显示: 顶部LED显示与触摸屏, 前方特别增设双8显示, 可远距离辨识
- *可自动摆风, 双层叶片带动气流
- *制冷、除湿、通风; 制热需加四通阀
- *90~120L的强大除湿力, 满水自动停机
- *三档风速自由切换: 高-中-低
- *人性化程控: 自动/ 睡眠/ 童锁
- *24档定时器: 定时开; 定时关(独家!)
- *自动蒸发技术: 免排水、不滴漏、强省电
- *另有金属外壳造型同款 PC-MMR

- *Max. Cooling Capacity: 24,000 BTU/H
- *Dual Display: Touch Pad on top with LED display (7-segment) and additional display in the front
- *Auto-Swing available(Vertical blades)
- *Cooling, (Heating), Dehumidifying, Ventilating
- *Powerful dehumidify capacity: 90~120L/Day
- *3-Step Fan Speed: High-Middle-Low
- *User-Friendly Program: Auto/ Lock/ Sleep
- *24Hour Timer: Auto-On / Auto-Off (Unique!)
- *Self-Evaporating: No Draining and No Dripping
- *Similar design in metal case: PC-MMR



产品型号 Model	PC53-MMA	PC65-MMA	PC70-MMA*
制冷能力 Cooling Capacity (W/ BTU)	5300W/ 18000BTU	6500W/ 22000BTU	7000W/ 24000BTU
制热能力 Heating Capacity (W/ BTU)	(5300W/ 18000BTU)	(6500W/ 22000BTU)	(7000W/ 24000BTU)
日除湿量 Dehumidification (30°C, RH80%)	90L/Day	120L/Day	150L/Day
冷媒种类 Refrigerant Type	R290/ R410a	R290/ R410a	R410a
音量 Noise (dB)	65	65	65
产品尺寸 Unit Dimensions (mm)	W540*D695*H1140	W540*D695*H1140	W540*D695*H1140
包装材积 Packing Dimensions (mm)	W590*D780*H1310	W590*D780*H1310	W590*D780*H1310
装柜量 Container Loading (20'/40'/40'HQ)	119	119	119
净重 Net Weight (kg)	62	68	70
毛重 Gross Weight (kg)	71	73	75

*24,000BTU仅限于部分无能效管制国家 *24,000BTU in countries without energy efficiency regulation

*制热为选配功能, 需加四通阀 *Optional Heating function: add a 4-way valve

控制面板 Control Panel



电源
Power



风速
Speed



定时
Timer



功能
Mode



摆风
Swing



睡眠
Sleep

产品设计 Close Look



双LED显示 Dual Display



手把(腰部) Handles(Middle)



自动摆风 Swing(Vertical)



双滤网 Two Filters



冷出风口接头, 可接双排风管供多房间/加强定点
Hose Connector: Connect Two Hoses for spot cooling

独创三面出风空调PC-SMA

All-Around Airflow AC | PC-SMA



移动空调新品 PC - SMA

Portable Air Conditioner | PC-SMA

- *最大制冷能力: 15,000 BTU/H
- *三面环绕式出风口, 无死角吹拂
- *颜值革新, 超流线外观与触感
- *触摸屏控制与LED双8显示
- *制冷、(选配制热)、除湿、通风
- *弹性温度控制(°C 或 °F可择一显示)
- *可自动摆风, 双层叶片带动气流
- *三档风速自由切换: 高-中-低
- *24档定时器: 定时开; 定时关(独家!)
- *自动蒸发技术: 免排水、不滴漏、强省电
- *50~65L/日的强大除湿力, 满水自动停机
- *特色风管收纳设计与包装
- *可加购配件窗格版, 效能大提升

- *Max. Cooling Capacity: 15,000 BTU/H
- *Surrounding air outlet, send the breeze all around the ambient without blocking
- *Cooling, (Heating), Dehumidifying, Ventilating
- *Flexible Temperature Setting (°C or °F available)
- *Touch Pad with LED display (7 segment)
- *Two powerful motors lead the ambient airflow
- *3-Step Fan Speed: High-Middle-Low
- *24Hour Timer: Auto-On / Auto-Off (Unique!)
- *Self-Evaporating No Draining, No Dripping
- *Powerful dehumidify capacity: 50L~65L/Day
- *Special exhaust hose packaging design in unit
- *Could Adapt to Accessory "Window Kits"

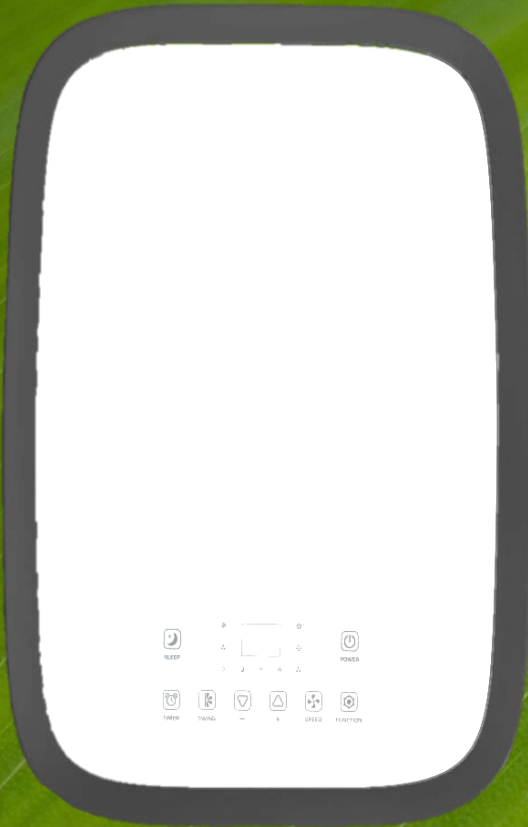


产品型号 Model	PC35-SMA	PC40-SMA	PC44-SMA*
制冷能力 Cooling Capacity (W/ BTU)	3500W/ 12000BTU	4000W/ 14000BTU	4400W/ 15000BTU
制热能力 Heating Capacity (W/ BTU)	(3500W/ 12000BTU)	4000W/ 14000BTU	4400W/ 15000BTU
日除湿量 Dehumidification (30°C, RH80%)	60L	70L	75L
冷媒种类 Refrigerant	R290/ R410a	R290/ R410a	R290/ R410a
音量 Noise (dB)	65	65	65
产品尺寸 Unit Dimensions (mm)	W360*D578*H782	W360*D578*H782	W360*D578*H782
包装材积 Packing Dimensions (mm)	W413*D608*H874	W413*D608*H874	W413*D608*H874
装柜量 Container Loading (20'/40'/40'HQ)	100 / 210 / 313	100 / 210 / 313	100 / 210 / 313
净重 Net Weight (kg)	30.5	31	31.5
毛重 Gross Weight (kg)	34	34.5	34.5

*15,000BTU仅限于部分无能效管制国家 *15,000BTU in countries without energy efficiency regulation

*制热为选配功能, 需加四通阀 *Optional Heating function: add a 4-way valve

控制面板 Control Panel



电源
Power



风速
Speed



定时
Timer



功能
Mode



摆风
Swing



睡眠
Sleep

产品设计 Close Look



LED触摸屏 LED Touch Pad



手把(顶部) Handles(Middle)



自动摆风 Swing(Vertical)



双滤网 Two Filters



三面U型出风口 All-Around Air Outlet (U-Shaped)

美形轻巧空调 PC-PMA

Aesthetic Compact AC | PC-PMA



移动空调新品 PC - MMA

Portable Air Conditioner | PC-MMA



- *制冷能力: 5,000~9,000 BTU/H
- *自动摆风, 快速带动循环气流
- *顶部触摸屏控制与双8显示
- *单冷空调: 制冷、除湿、通风
- *三档风速自由切换: 高-中-低
- *人性化程控: 自动/ 睡眠/ 童锁
- *24档定时器: 定时开; 定时关(独家!)
- *自动蒸发技术:
空调免排水、不怕滴漏, 散热强省电

- *Cooling Capacity: 5,000~9,000 BTU/H
- *Auto-Swing: efficiently runs the cool air cycle
- *Touch Pad on top with 7-Segment display
- *Cooling, Dehumidifying, Ventilating
- *3-Step Fan Speed: High-Middle-Low
- *User-Friendly Program: Auto/ Lock/ Sleep
- *24Hour Timer: Auto-On / Auto-Off (Unique!)
- *Self-Evaporating Technique:
No Draining and No Dripping, Power-Saving

【欧洲规格 EU standard】

产品型号 Model	PC20-PMA	PC26-PMA
制冷能力 Cooling Capacity	2000W/ 7000BTU	2600W/ 9000BTU
日除湿量 Dehumidification (30°C, RH80%)	30L/Day	35L/Day
能源因子值 EER (W/W)	2.61	2.61
风量 Air Volume	250m³/h	250m³/h
冷媒种类 Refrigerant Type	R290/ R410a	R290/ R410a
音量 Noise (dB)	<65	<65
产品尺寸 Unit Dimensions	W310*D340*H715 (mm)	
包装材积 Packing Dimensions	W360*D390*H885 (mm)	
装柜量 CNTR Loading (40'HQ)	569pcs	
净重 Net Weight (kg)	23.5	23.5
毛重 Gross Weight (kg)	25.5	25.5

【美国规格 USA DOE standard】

Model	PC5-PMA	PC6-PMA	PC7-PMA
Cooling Capacity	5,000BTU	6,000BTU	7,000BTU
Dehumidification (30°C, RH80%)	20L/Day	25L/Day	30L/Day
Combined Energy Efficiency Ratio CEERSD	7.54	8.42	4.56
Air Volume	150CFM	150CFM	150CFM
Refrigerant Type	R410a	R410a	R410a
Noise (dB)	<65	<65	<65
Unit Dimensions	W310*D340*H715 (mm)		
Packing Dimensions	W360*D390*H885 (mm)		
Cont. Loading (40'HQ)	569pcs		
Net Weight (kg)	23.5	23.5	24.5
Gross Weight (kg)	25.5	25.5	26.5

控制面板 Control Panel



电源
Power



风速
Speed



定时
Timer



功能
Mode



摆风
Swing

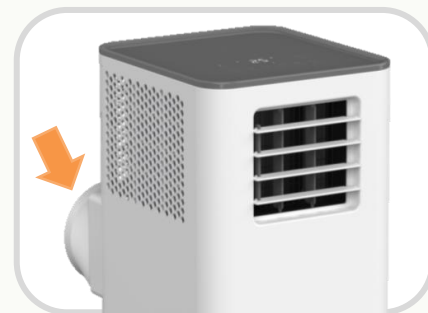


睡眠
Sleep

产品设计 Close Look



LED显示 LED Display



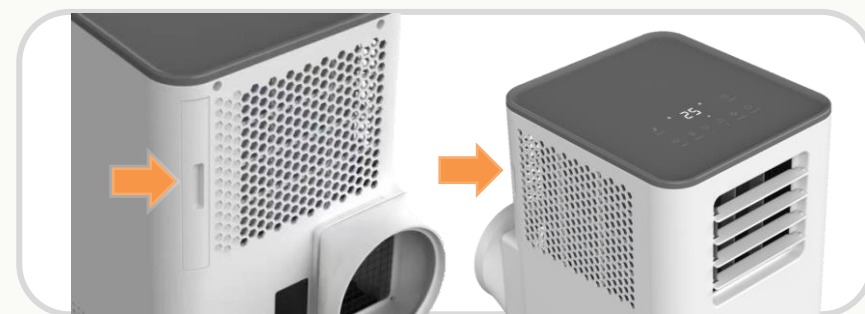
背部接管排风 Exhaust at Back



自动摆风 Swing(Vertical)



造型格栅 Simple Grille



背部与侧面双滤网 Two Filters (Back & Side)

三合一空调系列

3 in 1 Streamlined Series

- 冷热出风口可互换 Exchangeable Air Outlets
- 风管收纳保护设计 Built-In Hose Storage Design
- 多功能三机合一 All Purpose 3-in-1: AC + DH + Fan



移动空调 PC - AMH

Portable Air Conditioner | PC-AMH

- *制冷能力: 7,000~15,000 BTU/H
- *增优雅电子旋钮(温度/风量)搭配触摸屏
- *冷热出风口互换设计, 冷暖风多重使用
- *四功能: 制冷、制热、除湿、通风
- *双风扇马达, 具强力喷射气流
- *24档定时器: 定时开; 定时关(独家!)
- *自动蒸发技术: 免排水、不滴漏、强省电
- *50~65L/日的强大除湿力, 可替代除湿机
- *特殊机内风管收纳设计, 美观省空间
- *可加购件窗格版, 室内室外使用都方便
- *7~10,000BTU可做轻量化机体

- *Cooling Capacity: 7,000~15,000 BTU/H
- *Unique Touch Pad with Electric Knobs
- *Interchangeable Air-Outlets (Blades/ Hose Adapter)
- *4in1: Cooling, Heating, Dehumidifying, Ventilating
- *Two powerful motors generates superb airflow
- *24Hour Timer: Auto-On / Auto-Off (Unique!)
- *Self-Evaporating : No Draining & No Dripping
- *Powerful dehumidify capacity: 50L~65L/Day
- *Special exhaust hose packaging design in unit
- *Optional Accessory "Window Kits", use Indoor & Outdoor
- *Lite size for 7,000~10,000 BTU



产品型号 Model	PC20/26/30-AMH2	PC26/ 30/ 35/ 40-AMH	PC44-AMH*
制冷能力 Cooling Capacity	2000 – 2600 – 3000 W 7000 – 9000 – 10000 Btu	2600 – 3000 – 3500 - 4000 W 9000 – 10000 – 12000 - 14000 Btu	4400* W 15000* Btu
制热能力 Heating Capacity	2000 – 2600 – 3000 W 7000 – 9000 – 10000 Btu	2600 – 3000 – 3500 - 4000 W 9000 – 10000 – 12000 - 14000 Btu	4400* W 15000* Btu
日除湿量 Dehumidification (30°C, RH80%)	50 – 50 – 55 L/ Day	50 – 55 – 60 - 65 L/ Day	65L/ Day
冷媒种类 Refrigerant Type	R290/ R410a	R290/ R410a	R410a
音量 Noise (dB)	65	65	65
产品尺寸 Unit Dimensions (mm)	W315*D540*H640	W325*D540*H790	W325*D540*H790
包装材积 Packing Dimensions (mm)	W376*D631*H667	W401*D636*H844	W401*D636*H844
装柜量 Container Loading (20', 40', 40'HQ)	162/ 333/ 443	100/ 206/ 318	100/ 206/ 318
净重 Net Weight (kg)	25.6 - 27.5 - 28.5	28.5 - 29.5 - 30.5	31
毛重 Gross Weight (kg)	28.3 - 29.5 - 30.5	30.5 - 31.5 - 32.5	33

*15,000BTU仅限于部分无能效管制国家 *15,000BTU is only available in countries without energy efficiency regulation

*本系列具有CE & GS(R290, R410a), CCC(R290, R410a)认证 *This series is CE & GS(R290, R410a), CCC(R290, R410a) certified

控制面板 Control Panel



电源
Power



风速
Speed



定时
Timer



功能
Mode



温度
Temp.



睡眠
Sleep

产品设计 Close Look



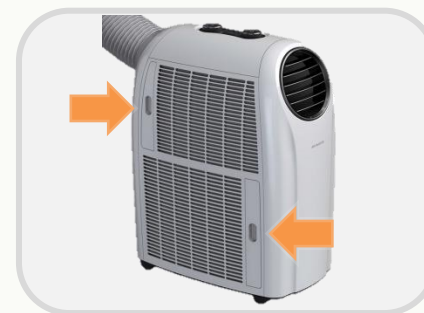
LED触摸屏 LED Touch Pad



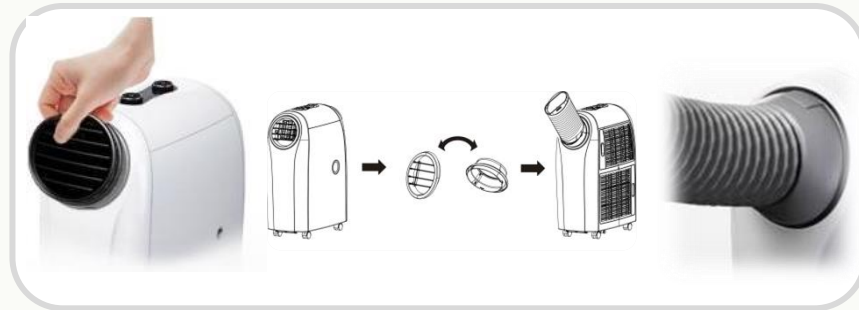
流线造型 Streamlined Case



风管收纳 Internal Hose Storage



双滤网 Two Filters



冷热出风口互换 Interchangeable Air Outlets (Cold/Hot)



P C - A M K
LED触摸屏 LED Touch Pad

制冷&制热 Cooling & Heating
PC-AMK : 9,000~15,000 BTU

制冷 & 制热 Cooling & Heating
PC-AM1F : 9,000~15,000 BTU

P C - A M 1 F
LED触摸屏 LED Touch Pad

制冷 & 制热 Cooling & Heating
PC-AMF : 9,000~15,000 BTU
PC-AMF2 : 7,000~10,500 BTU

P C - A M F
电子按键 Electronic Control



P C - A M 1 E
LED触摸屏 LED Touch Pad

制冷&制热 Cooling & Heating
PC-AM1E : 9,000~15,000 BTU

制冷&制热 Cooling & Heating
PC-AMD : 9,000~15,000 BTU
PC-AMD2: 7,000~10,500 BTU

P C - A M D
电子按键 Electronic Control

P C - A M E
电子按键 Electronic Control

制冷&制热 Cooling & Heating
PC-AME : 9,000~15,000 BTU
PC-AME2: 7,000~10,500 BTU



P C - A M 1 B
LED触摸屏 LED Touch Pad

制冷&制热 Cooling & Heating
PC-AM1B : 9,000~15,000 BTU
PC-AM1B2: 7,000~10,500 BTU

制冷&制热 Cooling & Heating
PC-AMA : 9,000~15,000 BTU

P C - A M A
电子按键 Electronic Control

P C - A M B
电子按键 Electronic Control

制冷&制热 Cooling & Heating
PC-AMB : 9,000~15,000 BTU
PC-AMB2: 7,000~10,500 BTU

制冷&制热 Cooling & Heating
PC-FMA : 9,000~14,000 BTU

P C - F M A
电子按键 Electronic Control

轻巧空调系列

C o m p a c t S e r i e s

- 三合一多功能产品 **Multiple Functions 3-in-1**
- 风管收纳保护设计 **Built-In Hose Storage Design**
- 特制回风接管配件 **Special Return Airway Cover**



移动空调 PC-KMG

Portable Air Conditioner | PC-KMG

- *制冷能力: 7,000~12,000 BTU/H
- *制冷、除湿、通风
- *触摸屏控制与双8显示
- *轻巧机体设计, 省空间、不占位
- *单风轮结构, 大幅降低噪音与重量
- *可自动摆风, 双层叶片带动气流
- *24档定时器: 定时开; 定时关(独家!)
- *自动蒸发技术: 免排水、不滴漏、强省电
- *30~55L/日强大除湿力, 满水自动停机
- *特殊机内风管收纳设计, 包装大减量
- *特制回风罩, 降温效果提升、可露营使用

- *Cooling Capacity: 7,000~12,000 BTU/H
- *Cooling, Dehumidifying, Ventilating
- *Touch Pad with 7-Segment display
- *Compact one-piece-formed design
- *Single motor unit, more quiet and lighter.
- *Double layer blades, with Auto-Swing
- *24Hour Timer: Auto-On / Auto-Off (Unique!)
- *Self-Evaporating : No Draining & No Dripping
- *Powerful dehumidify capacity: 30L~55L/Day
- *Special exhaust hose packaging design in unit
- *Could Adapt to Accessory "Window Kits", and "Return Airway Cover" to improve cooling efficiency.



产品型号 Model	PC20-KMG	PC26-KMG	PC35-KMG*
制冷能力 Cooling Capacity	2000W 7000Btu	2600W 9000Btu	3500W 12000Btu
日除湿量 Moisture removed (30°C, RH80%)	30L/ Day	50L/ Day	55L/ Day
冷媒种类 Refrigerant Type	R290/ R410a	R290/ R410a	R410a
音量 Noise (dB)	65	65	65
产品尺寸 Unit Dimensions (mm)	W330*D480*H490	W330*D480*H490	W330*D480*H490
包装材积 Package (mm)	W408*D529*H530	W408*D529*H530	W408*D529*H530
装柜量 Container Loading (20', 40', 40'HQ)	202/ 422/ 424	202/ 422/ 424	202/ 422/ 424
净重 Net Weight (kg)	23.5	24.5	25.5
毛重 Gross Weight (kg)	25.5	26.5	27.5

*12,000BTU仅限于部分无能效管制国家 *12,000BTU is only available in countries without energy efficiency regulation

*K系列具有CE & GS(R290, R410a), CCC(R290, R410a), CB(R410a) KC(R290, R410a)认证

*The K series is CE & GS(R290, R410a), CCC(R290, R410a), CB(R410a) KC(R290, R410a) certified

控制面板 Control Panel



功能
Mode



风速
Speed



定时
Timer



摆风
Swing



温度
Temp.



睡眠
Sleep

产品设计 Close Look



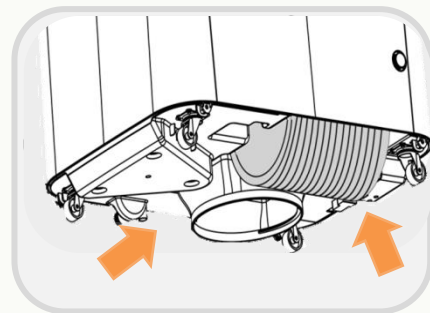
叶片调节 Blades Knob



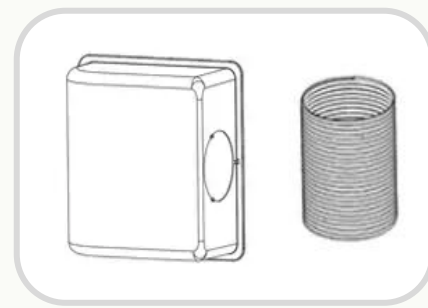
双滤网 Two Filters



可双管回风
Two-Ducts available



风管收纳 Built-In Ducts



回风罩 Return Airway Cover

移动空调 PC-BM1D

Portable Air Conditioner | PC-BM1D

***制冷能力: 7,000~12,000 BTU/H**

*制冷、除湿、通风

*触摸屏控制与双8显示

*轻巧机体设计, 省空间、不占位

*单风轮结构, 大幅降低噪音与重量

*人性化程控: 自动/风速/ 睡眠/ 童锁

*24档定时器: 定时开; 定时关(独家!)

*自动蒸发技术: 免排水、不滴漏、强省电

*30~55L/日强大除湿力, 满水自动停机

*特殊机内风管收纳设计, 包装大减量

*加购窗格版、回风罩配件, 效能大提升

***Cooling Capacity: 7,000~10,000 BTU/H**

*Cooling, Dehumidifying, Ventilating

*Touch Pad with 7-Segment display

*Compact one-piece-formed design

*Single motor unit, more quiet and lighter weight.

*User-Friendly Program: Auto/ Speed/ Lock/ Sleep

*24Hour Timer: Auto-On / Auto-Off (Unique!)

*Self-Evaporating : No Draining & No Dripping

*Powerful dehumidify capacity: 30L~55L/Day

*Special exhaust hose packaging design in unit

*Could Adapt to Accessory "Window Kits", and "Return Airway Cover" to improve cooling efficiency.



产品型号 Model	PC20-BM1D	PC26-BM1D	PC35-BM1D*
制冷能力 Cooling Capacity	2000W 7000Btu	2600W 9000Btu	3500W 12000Btu
日除湿量 Moisture removed (30°C, RH80%)	30L	50L	55L
冷媒种类 Refrigerant Type	R410a	R410a	R410a
音量 Noise (dB)	65	65	65
产品尺寸 Unit Dimensions (mm)	W288*D428*H625	W288*D428*H625	W288*D428*H625
包装材积 Packing Dimensions	W372*D537*H694	W372*D537*H694	W372*D537*H694
装柜量 Container Loading (20', 40', 40'HQ)	202/ 422/ 424	202/ 422/ 424	202/ 422/ 424
净重 Net Weight (kg)	23.5	24.5	25.5
毛重 Gross Weight (kg)	25.5	26.5	27.5

***12,000BTU仅限于部分无能效管制国家 *12,000BTU is only available in countries without energy efficiency regulation**

***B系列具有CCC(R410a), 美国与加拿大ETL(R410a)认证 *The B series is CCC(R410a), Canada & USA ETL(R410a) certified**

控制面板 Control Panel



电源
Power



风速
Speed



定时
Timer



功能
Mode



温度
Temp.

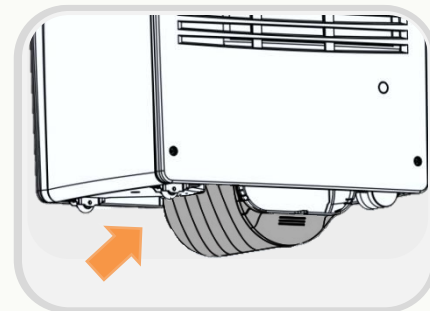


睡眠
Sleep

产品设计 Close Look



LED触摸屏 LED Touch Pad



内藏风管 Built-In Duct



双滤网 Two Filters



可双管回风 Two-Ducts available



冷风接管配件 Cool Air Hose Adapter



P C - K M H
LED触摸屏 LED Touch Pad

制冷 Cooling Only
PC-KMH : 7,000~9,000 BTU
*Some Area: 12,000BTU

制冷 Cooling Only
PC-BMF : 7,000~9,000 BTU
*Some Area: 12,000BTU

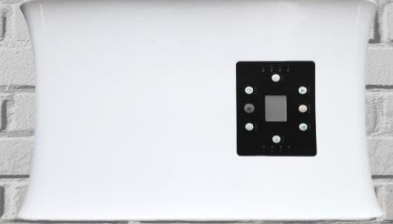
P C - B M F
LED触摸屏 LED Touch Pad

P C - K M A
电子按键 Electronic Control

制冷 Cooling Only
PC-KMA : 7,000~9,000 BTU
*Some Area: 12,000BTU

制冷 Cooling Only
PC-BMG : 7,000~9,000 BTU
*Some Area: 12,000BTU

P C - B M G
LED触摸屏 LED Touch Pad



P C - B M D
电子按键 Electronic Control

制冷 Cooling Only
 PC-BMD : 7,000~9,000 BTU
 *Some Area: 12,000BTU

制冷 Cooling Only
 PC-BMB : 7,000~9,000 BTU
 *Some Area: 12,000BTU

P C - B M B
电子按键 Electronic Control

P C - B M A
电子按键 Electronic Control

制冷 Cooling Only
 PC-BMA : 7,000~9,000 BTU
 *Some Area: 12,000BTU

迷你空调系列

M i n i 6 i n 1 S e r i e s

- 六合一多功能产品 Multiple Functions 6-in-1
- 超低能耗好省电 Power Saving, 300w consumption
- 户外携带型轻便设计 Outdoor Portable Design



移动空调 PC - DM1H

Portable Air Conditioner | PC-DM1H

- *最大制冷能力: 3,000 BTU/H
- *超低功耗仅360W, 可携带户外活动、露营等场所, 搭配电池使用
- *触摸屏与LED双8显示
- *功能: 制冷、除湿、加湿、通风
- *选配: 制热(PTC)、净化(HEPA/活性炭滤网)
- *自然加湿: 200ml/ Hour
- *24档定时器: 定时开; 定时关(独家!)
- *20~25L/日的强大除湿力, 满水自动停机
- *人性化程控: 自动/ 睡眠/ 童锁
- *可加购配件窗格版, 效能大提升

- *Max. Cooling Capacity: 3,000 BTU/H
- *Ultra low power consumption 360W, available to use in outdoor activity with portable battery
- *Touch Pad with LED display (7 segment)
- *Function: Cooling, Dehumidifying, Ventilating
- *Optional: PTC Heating, Purifying(HEPA/ Carbon)
- *Moist Humidify: 200ml/ Hour
- *24Hour Timer: Auto-On / Auto-Off (Unique!)
- *Powerful dehumidify capacity: 20L~25L/Day
- *User-Friendly Program: Auto/ Lock/ Sleep
- *Could Adapt to Accessory "Window Kits"



产品型号 Model	PC09-DM1H	PC11-DM1H*
制冷能力 Cooling Capacity (W/ BTU)	900W/ 3000Btu	1100W/ 4000Btu
除湿量 Dehumidification (30°C, RH80%)	25L	30L
加湿量 Humidifying Capacity (mL/ Hour)	200ml	200ml
冷媒种类 Refrigerant	R134a	R134a
音量 Noise (dB)	62	62
产品尺寸 Unit Dimensions (mm)	W280*D375*H505	W280*D375*H505
包装材积 Packing Dimensions (mm)	W310*D450*H530	W310*D450*H530
装柜量 Container Loading (20'/40'/40'HQ)	376 / 768 / 955	376 / 768 / 955
净重 Net Weight (kg)	14.5	15.5
毛重 Gross Weight (kg)	15.7	16.7

*4,000BTU仅限于部分无能效管制国家 4,000BTU is only available in countries without energy efficiency regulation

*本系列具有CCC与CB认证, LMA/LMB仅CCC认证 *Mini PACs are CCC and CB certified, models LMA/ LMB only CCC certified

*暖气为选配功能, 需加PTC发热丝 *Optional Heating function: add a PTC heater

控制面板 Control Panel



触摸屏 Touch Pad



功能
Mode



风速
Speed



定时
Timer



摆风
Swing



温度
Temp.



睡眠
Sleep

产品设计 Close Look



热风免接管 Hose Removable



独立除湿水箱 Water Tank



多重净化滤网(HEPA/活性炭) Multiple Filtrations(HEPA/ Carbon)



上吹式冷出风 (可接管使用) Up-Blow Cool Air (Hose attachable)



P C - L M B
 电子按键 Electronic Control

制冷, 制热选配 With Cooling
 PC-LMA: 2,700~4,500 BTU
 (Optional Heating) 600W PTC

制冷, 制热选配 With Cooling
 PC-DMF : 2,700 ~ 3,000 BTU
 (Optional Heating) 600W PTC

P C - D M F
 电子按键 Electronic Control

P C - L M A
 电子按键 Electronic Control

制冷, 制热选配 With Cooling
 PC-LMB: 2,700~4,500 BTU
 (Optional Heating) 600W PTC



P C - D M 1 D
LED触摸屏 LED Touch Pad

制冷, 制热选配 With Cooling
 PC-DM1D: 2,700~3,000 BTU
 (Optional Heating) 600W PTC

制冷, 制热选配 With Cooling
 PC-DMB : 2,700 ~ 3,000 BTU
 (Optional Heating) 600W PTC

P C - D M B
电子按键 Electronic Control

P C - D M G
电子按键 Electronic Control

制冷, 制热选配 With Cooling
 PC-DMG: 2,700~3,000 BTU
 (Optional Heating) 600W PTC

制冷, 制热选配 With Cooling
 PC-DM2A: 2,700 ~ 3,000 BTU
 (Optional Heating) 600W PTC

P C - D M 2 A
电子按键 Electronic Control

内藏风道系列

B u i l t - I n D u c t S e r i e s

- 风管收纳保护设计 Built-In Duct Protection
- 高效冷、暖、除湿 High Performance HVAC unit



移动空调 PC-02MA

Portable Air Conditioner | PC-02MA

- *制冷/制热能力: 10,500~15,000 BTU/H
- *简约流线设计, 便于清洁维护
- *触摸屏控制与LED双8显示
- *制冷、(选配制热)、除湿、通风
- *50~65L/日的强大除湿力, 满水停机
- *弹性温度控制(°C 或 °F可择一显示)
- *双层导风叶片, 可吹拂指定区域
- *三档风速自由切换: 高-中-低
- *人性化程控: 自动/ 睡眠/ 童锁
- *24档定时器: 定时开; 定时关(独家!)
- *自动蒸发: 免排水、不滴漏、强省电
- *特色风管收纳设计与包装

- *Cooling/ Heating Capacity: 10,500~15,000 BTU/H
- *Simple and classic shape, easy to clean
- *Cooling, (Heating), Dehumidifying, Ventilating
- *Powerful dehumidify capacity: 50L~65L/Day
- *Flexible Humidity Setting (°C or °F available)
- *2 layers of blades, lead the air cooling specific spot
- *3-Step Fan Speed: High-Middle-Low
- *User-Friendly Program: Auto/ Lock/ Sleep
- *24Hour Timer: Auto-On / Auto-Off (Unique!)
- *Self-Evaporating No Draining, No Dripping
- *Exhaust hose storing & packing protection



产品型号 Model	PC30-02MA	PC35-02MA	PC40-02MA	PC44-02MA*
制冷能力 Cooling Capacity (W/ BTU)	3000W/ 12000BTU	3500W/ 12000BTU	4000W/ 14000BTU	4400W/ 15000BTU
制热能力 Heating Capacity (W/ BTU)	(3000W/ 12000BTU)	(3500W/ 12000BTU)	4000W/ 14000BTU	4400W/ 15000BTU
除湿量 Dehumidification (30°C, RH80%)	50L	60L	70L	75L
冷媒种类 Refrigerant	R410a	R410a	R410a	R410a
音量 Noise (dB)	65	65	65	65
产品尺寸 Unit Dimensions (mm)	W530*D345*H840	W530*D345*H840	W530*D345*H840	W530*D345*H840
包装材积 Packing Dimensions (mm)	W580*D395*H880	W580*D395*H880	W580*D395*H880	W580*D395*H880
装柜量 Container Loading (20'/40'/40'HQ)	114 / 240 / 349	114 / 240 / 349	114 / 240 / 349	114 / 240 / 349
净重 Net Weight (kg)	27.5	29.5	31.5	33.5
毛重 Gross Weight (kg)	30.5	32.5	34.5	36.5

*本系列仅PC-02MA持有CB认证, 01/06等型号无认证

*Only PC-02MA is CB certified, models 01/ 06 are without certification

*15,000BTU以上仅限于部分无能效管制国家

*15,000BTU and above is only available in countries without energy efficiency regulation

*制热为选配功能, 需加四通阀

*Optional Heating function: add a 4-way valve

控制面板 Control Panel



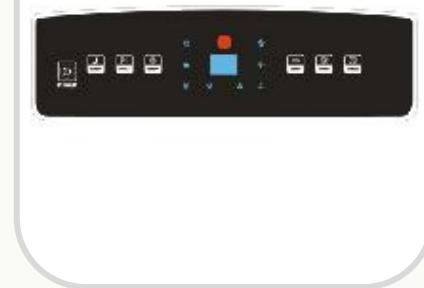
产品设计 Close Look



2道导风叶片 2 Air Blades



双滤网 Two Filters



电子按键 Electronic Control



内藏风管保护 Built-In Duct Protection



P C - 0 1 M A
 电子按键 Electronic Control

制冷、(选配制热): 9~14000 BTU
 Cooling Capacity: 9,000~14,000 BTU
 (Optional Heating: Same Capacity)

制冷、(选配制热): 9000~14000 BTU
 Cooling Capacity: 9,000~ 14,000 BTU
 (Optional Heating : Same Capacity)

P C - 0 6 M *
 电子按键 Electronic Control

P C - 0 6 M I
 电子按键 Electronic Control

制冷、(选配制热): 9~14000 BTU
 Cooling Capacity: 9,000~14,000 BTU
 (Optional Heating: Same Capacity)



1 Blade :
 PC-06ME
 PC-06MK



2 Blades:
 PC-06MD
 PC-06MG
 PC-06MR

新品总表

Product Table (PAC)



型号	PC-MMA	PC-SMA	PC-PMA
控制面板 Control	触摸屏 Touch Pad	触摸屏 Touch Pad	触摸屏 Touch Pad
制冷能力(W/ BTU) Cooling Capacity	5,300~7,000W 18,000~24,000BTU	3,200~4,400W 11,000~15,000BTU	2,000~2,600W 7,000~9,000BTU
制热能力(W/ BTU) Heating Capacity	N/A	N/A	N/A
日除湿量(30°C 80%) Dehumidification (L/Day)	90~150L	60~75L	30~50L
风量 Air Volume(m3/H)	950	360~450	250
冷媒 Refrigerant	(EU)R290/ R410a	(EU)R290/ R410a	(EU)R290/ R410a
音量 Noise (dB)	65	65	<65
尺寸 Dimension (mm)	W540*D695*H1140	W360*D578*H782	W310*D340*H715
包装尺寸 Packaging(mm)	W590*D780*H1310	W413*D608*H874	W360*D390*H885
装柜量(20'/40'/40'HQ) Container Loading, pcs	119 (40'HQ)	100 / 210 / 313	569 (40'HQ)
净重 Net Weight (kg)	62~70kg	30.5~31.5kg	23.5kg
毛重 Gross Weight (kg)	71~75kg	34~34.5kg	25.5kg
安规认证 Certificate	N	N	N



大三合一总表

Product Table (Standard)

制冷&制热能力 Capacity: 9,000~14,000 BTU

- 冷热出风口可互换 Exchangeable Air Outlets
- 风管收纳保护 Built-In Hose Storage Design
- 三合一多功能产品 Multiple Functions 3-in-1

型号	PC-AMK	PC-AMH	PC-AME/ PC-AMF	PC-AMD/ PC-AMB	PC-AMA
制冷/制热 (BTU) Cooling & H Capacity	9000~14000 (=2.6k ~ 9k W)	9000~14000 (=2.6k ~ 9k W)	9000~14000 (=2.6k ~ 9k W)	9000~14000 (=2.6k ~ 9k W)	9000~14000 (=2.6k ~ 9k W)
除湿(30°C 80%) Dehumidification	50~65L/Day	50~65L/Day	50~65L/Day	50~65L/Day	50~65L/Day
冷媒 Refrigerant	R290/ R410a	R290/ R410a	R290/ R410a	R290/ R410a	R290/ R410a
尺寸 Size (W*D*H, mm)	300*505*775	325*540*790	300*550*760	315*540*640	300*486*740
包装 Package (mm)	370*590*855	401*636*844	330*550*815	376*631*667	330*540*780
装柜量 (20'/40'/40'HQ)	116/ 248/ 372	100/ 333/ 443	140/ 288/ 430	162/ 333/ 443	224/ 457/ 462
净重 N.W. (kg)	27.5 ~ 30.5	27.5 ~ 30.5	27.5 ~ 30.5	27.5 ~ 30.5	27.5 ~ 30.5
毛重 G. W. (kg)	29.5 ~ 32.5	29.5 ~ 32.5	29.5 ~ 32.5	29.5 ~ 32.5	29.5 ~ 32.5
认证 Certificate	CE(R290), GS(R290), CCC(R410a), c ETL us(R410a)				



小三合一总表

Product Table (Smaller Unit)

制冷&制热能力 Capacity: 7,000~10,500 BTU

- 冷热出风口可互换 Exchangeable Air Outlets
- 风管收纳保护 Built-In Hose Storage Design
- 三合一多功能产品 Multiple Functions 3-in-1

型号	PC-AMH2	PC-AMF2	PC-AME2	PC-AMD2	PC-AMB2
制冷/制热 (BTU) Cooling & H Capacity	2000~3000 (=7k~10.5k W)	2000~3000 (=7k~10.5k W)	2000~3000 (=7k~10.5k W)	2000~3000 (=7k~10.5k W)	2000~3000 (=7k~10.5k W)
除湿(30°C 80%) Dehumidification	30~35L/Day	30~35L/Day	30~35L/Day	30~35L/Day	30~35L/Day
冷媒 Refrigerant	R290/ R410a	R290/ R410a	R290/ R410a	R290/ R410a	R290/ R410a
尺寸 Size (W*D*H, mm)	315*540*640	300*526*624	300*526*612	300*480*618	300*480*618
包装 Package (mm)	376*631*667	376*631*667	330*560*660	330*510*660	330*510*660
装柜量 (20'/40'/40'HQ)	162/ 333/443	210 / 441 / 581	210 / 441 / 581	234/ 484/ 636	234/ 484/ 636
净重 N.W. (kg)	26.5~28.5	26.5~28.5	26.5~28.5	26.5~28.5	26.5~28.5
毛重 G. W. (kg)	28.5~30.5	28.5~30.5	28.5~30.5	28.5~30.5	28.5~30.5
认证 Certificate	CE, GS(R290), CCC(R410a)				



轻巧空调总表

Product Table (Compact)

制冷能力 Cooling Capacity: 7,000~12,000 BTU

- 风管收纳保护 Built-In Hose Storage Design
- 三合一多功能产品 Multiple Functions 3-in-1
- 单马达结构 Single motor mechanism
- 可搭配回风罩 Return Airway Accessory

型号	PC-KMG PC-KMH	PC-BM1D	PC-BMF PC-BMG	PC-BMA PC-BMD	PC-BMB
制冷/制热 (BTU) Cooling & H Capacity	7000~12000 (2k ~ 12k W)	7000~12000 (2k ~ 12k W)	7000~12000 (2k ~ 12k W)	7000~12000 (2k ~ 12k W)	7000~12000 (2k ~ 12k W)
除湿(30°C 80%) Dehumidification	30~55L/Day	50~65L/Day	50~65L/Day	50~65L/Day	50~65L/Day
冷媒 Refrigerant	R290/ R410a	R410a	R410a	R410a	R410a
尺寸 Size (W*D*H, mm)	330*480*490	288*428*625	288*428*640	288*428*625	300*455*630
包装 Package (mm)	408*529*530	372*537*694	318*463*660	318*463*660	355*495*665
装柜量 (20'/40'/40'HQ)	202/ 422/ 424	202/ 422/ 424	270/ 555/ 730	270/ 555/ 730	216/ 495/ 665
净重 N.W. (kg)	23.5~25.5	23.5~25.5	23.5~25.5	23.5~25.5	23.5~25.5
毛重 G. W. (kg)	25.5~27.5	25.5~27.5	25.5~27.5	25.5~27.5	25.5~27.5
认证 Certificate	PC-K: CE & GS, CCC(R290, R410a), CB(R410a), KC(R290, R410a); PC-B: CCC, ETL(R410a)				



迷你空调总表

Product Table (Mini 6in1)

制冷&制热能力 Capacity: 7,000~10,500 BTU

- 冷热出风口可互换 Exchangeable Air Outlets
- 风管收纳保护 Built-In Hose Storage Design
- 三合一多功能产品 Multiple Functions 3-in-1

型号	PC-DM1H	PC-LMA PC-LMB	PC-DMF	PC-DM1D PC-DMG	PC-DM2A
制冷 Cooling Capacity (BTU)	3000 (=900W)	3000 (=900W)	3000 (=900W)	3000 (=900W)	3000 (=900W)
除湿(30°C 80%) Dehumidification	25 L/Day	25 L/Day	25 L/Day	25 L/Day	25 L/Day
加湿 Humidification	200 ml/H	200 ml/H	200 ml/H	200 ml/H	200 ml/H
尺寸 Size (W*D*H, mm)	280*375*505	280*375*505	282*400*507	282*400*507	280*375*505
包装 Package (mm)	310*450*H30	310*450*530	325*438*532	325*438*532	310*450*530
装柜量 (20'/40'/40'HQ)	376/ 768/ 955	376/ 768/ 955	364/ 756/ 943	364/ 756/ 943	376/ 768/ 955
净重 N.W. (kg)	14.5	15.5	15.5	15.5	15.5
毛重 G. W. (kg)	15.7	16.7	16.7	16.7	16.7
认证 Certificate	CCC, CB (R134a)				



内藏风道总表

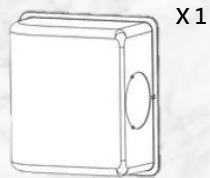
Product Table (Built-In Duct)

- 制冷&制热能力 Capacity: 9,000~14,000 BTU**
- **风管收纳保护 Built-In Hose Storage Design**
 - **三合一多功能产品 Multiple Functions 3-in-1**

型号	PC-FMA	PC-02MA	PC-01MA PC-06MI	PC-06MD PC-06MK
制冷/制热 (BTU) Cooling & Heating	9000~14000 (=2.6k ~ 9k W)	9000~14000 (=2.6k ~ 9k W)	9000~14000 (=2.6k ~ 9k W)	9000~14000 (=2.6k ~ 9k W)
除湿(30°C 80%) Dehumidification	50~65L/Day	50~65L/Day	50~65L/Day	50~65L/Day
冷媒 Refrigerant	R410a	R410a	R410a	R410a
尺寸 Size (W*D*H, mm)	355*546*793	530*345*840	476*358*840	476*358*780
包装 Package (mm)	384*576*845	580*395*880	540*417*880	540*417*820
装柜量 CNTR (20'/40'/40'HQ)	120/ 248/ 372	114/ 240/ 349	116 / 244 / 356	116 / 244 / 366
净重 N.W. (kg)	27.5~30.5	27.5~33.5	28.5~31.5	28.5~31.5
毛重 G. W. (kg)	29.5~32.5	30.5~36.5	31.5~34.5	31.5~34.5
认证 Certificate	N/A			

移动空调配件 | 回风罩

PAC Accessories | Return Airway Cover



X1



X1



X1



X2

回风罩

Return Airway Cover

风罩接口

Cover Adaptor

Φ150mm排风管

Φ150mm Exhaust Hose

风管末端接口

Hose End Adapter

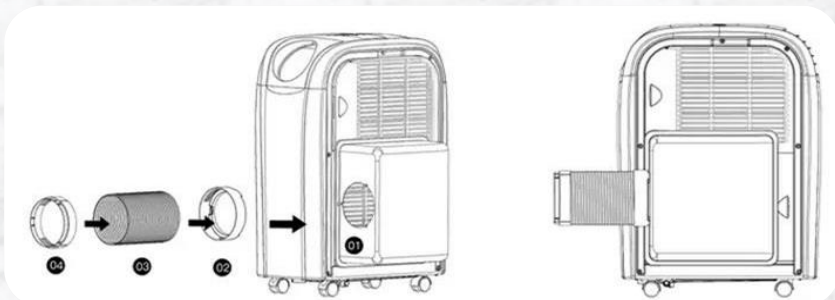
一般单管移动空调，使用时室内气压变低(室内进风、并排出热空气到室外，造成内部空气变少)，因为大气压力原理，室外的未处理空气会从缝隙涌入，使移动空调的室内降温效果较差，直吹效果比较优异。

为改善这个情况，特制可拆卸回风罩，自由选择使用时机，有单管移动空调的便利性、省空间、好移动；在极高温时切换成双管移动空调，高效率环境降温！

The easy-removable Return Airway Cover preserve both benefits of single-duct and double-ducts PAC. Use the cover to keep the air pressure balance, improving the ambience cooling efficiency in specific hot conditions; remove cover to keep unit's mobility and save indoor space.

产品组装方式

How to Assemble



依序装上回风罩、风罩接口、排风管、排风管末端接口与窗隔板
Follow below orders to assemble: Return airway cover, Cover adaptor, Exhaust hose, Hose adapter and related Window kit.

适用产品系列
Applicable Series



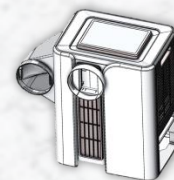
三合一系列 3in1 Series
PC-AMA/B/E/F/K



轻巧空调 K系列, B系列
Compact PAC: K&B Series



上回风(蒸发器 冷风) 限 AMH2/AMI2
Evap. Return Airway only AMH/AMI2



迷你空调 限LMA/LMB
Mini PAC: only LMA/LMB



移动空调配件 | 窗隔板

PAC Accessories | Window Kits

窗隔板可以维持室内密闭性，且有效排除空调制冷产生的热风。配合使用环境，可以安装不同形式的配件。

The window kit can keep the ambience in good balance of air pressure, and efficiently lead the hot exhaust air out. Various design of window kits for different environment.

TYPE A

最短: 55公分 最长: 100公分
Min.: 55cm Max.: 100cm

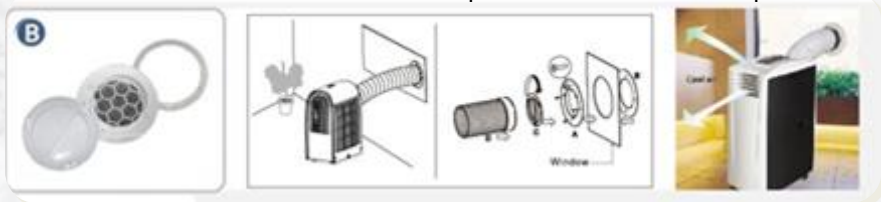


A型窗隔板的最大特点是不需在墙壁或窗上开洞，且可配合窗户设计垂直或水平安装。滑动板长度可以随窗户尺寸调整、再以螺丝锁紧，将固定住的A型窗隔板用窗户、窗框沟槽夹住即可完成安装。

The type A is unnecessary to change structure of the room, just put the **Type A window kits** with the adjustable sliding pad vertically or horizontally to the window. Find the suitable length and fix the pads with screws, and then fit the window kit set into the window groove.

TYPE B

开孔直径: $\phi 140\text{mm}$ 螺丝孔径 $\phi 4.5\text{mm}$
Hole Diameter: $\phi 140\text{mm}$ Screw $\phi 4.5\text{mm}$

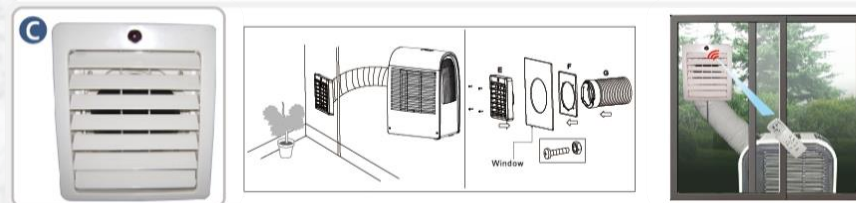


使用B/ C型窗隔板时需先在墙壁或玻璃窗上开孔，再将外层圆环与内层格栅环夹住墙壁/玻璃窗并以螺丝锁紧。窗隔板不使用或者不连接机台时，请盖上罩子，避免异物入侵。

To use **Type B or C window kits**, you have to open a hole on window or wall, and fix the inner grille ring & outer ring with screws. Cover the window kit when you remove the unit from window kit, to avoid items enter the ambience.

TYPE C

开孔直径: $\phi 158\text{mm}$ 螺丝孔径 $\phi 4.5\text{mm}$
Hole Diameter: $\phi 158\text{mm}$ Screw $\phi 4.5\text{mm}$



*C型窗隔板具有红外线接收器或USB接头，使用者可用遥控器或者APP远距离控制。

*Type C window kits include either a red-farad receiver or type-A USB hub, users could control the unit with remote controller or app.